

PREMIER & GUESTS

Falls View

PRODUCTION
SALE
VOLUME III

WEDNESDAY, DECEMBER

30

2020

HOSTED AT PREMIER LIVESTOCK • MILVERTON, ON • 7:00 PM

Welcome...

What a year 2020 has been, it has challenged us like no other in many ways. Many people's lives have been turned upside down through no fault of their own. We have seen many events, shows, etc. get cancelled and we have had rules and regulations imposed upon us like we could never have imagined.

I do think we all need to be thankful that we are involved in the AGRICULTURE sector and we need to be proud of that. I would like to think that the importance of the AGRICULTURAL food production industry is absolutely the most ESSENTIAL of all services.

This year has taught us that sometimes you need to think outside the box from how we have traditionally done things in the past. That is what led us to host the first Premier Falls View Junior Jackpot Show this past Labour Day weekend. After all junior shows as well as the Toronto Royal Winter Fair show were cancelled we thought we needed to host a show for the juniors as they are the future of our industry. So we thought outside the box, organized and executed an on farm jackpot show which ended up seeing 94 juniors and 134 head of cattle exhibited. The show involved showmanship classes along with conformation and a sale for the juniors with their market calves. It was the highlight of the summer as the show created a sense of normality. It was a weekend that brought out so much good and generosity from people that we look forward to hosting it again in 2021!

This year's sale is going to have a different look then the past two years, however, rest assured the quality that you have come to expect from the Falls View sale will be second to none! We will do everything within our power to provide the same hospitality and top quality genetics as always.

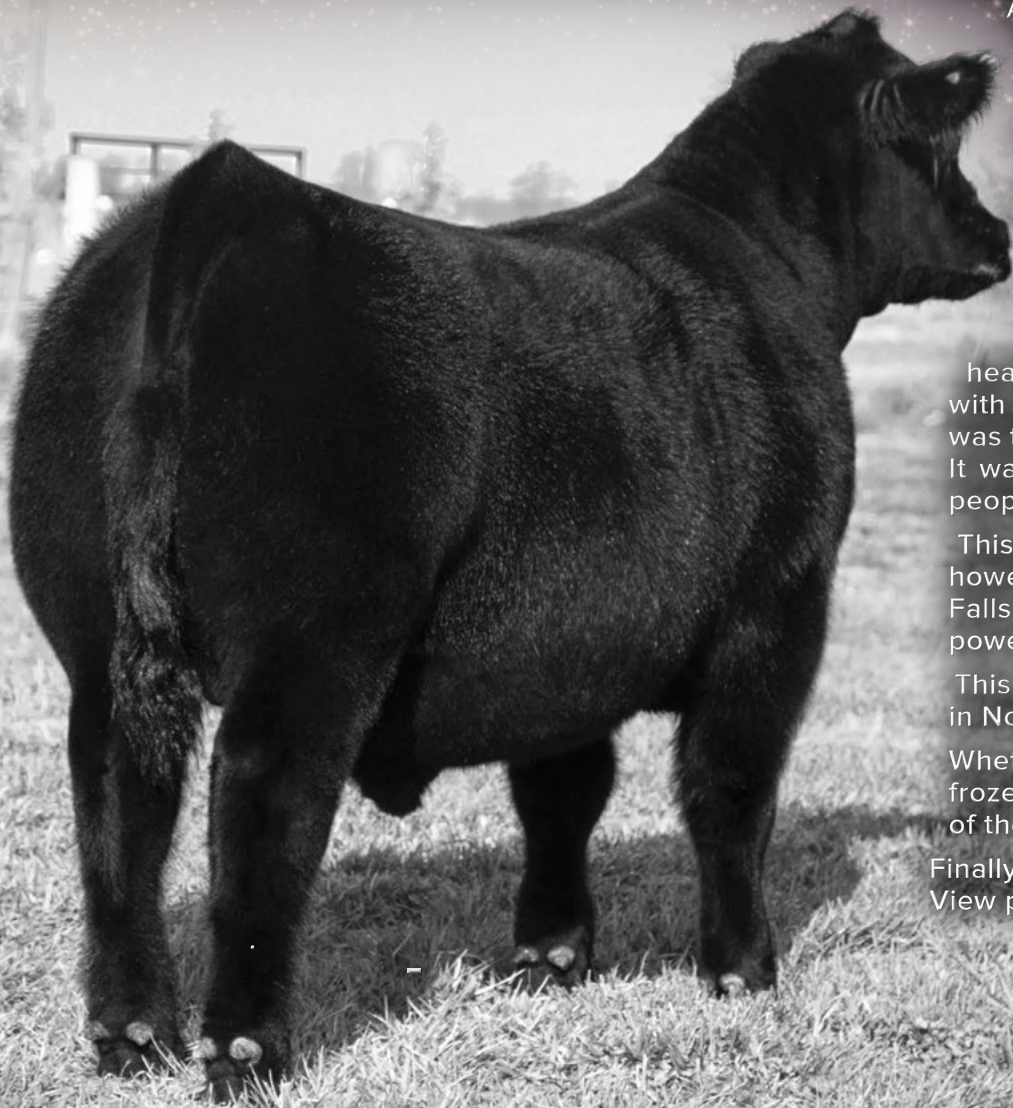
This year's offering is loaded with some of the most elite genetics available in North America.

Whether you are looking for a donor prospect, show heifer or cutting edge frozen genetics, I am confident you will find it as you flip through the pages of the catalogue.

Finally a big thanks to all that have supported our program and the Falls View production sale. Your success is the fuel that drives us.

PETER FRIJTERS

**For our USA friends to the south, keep in mind the buying power you have with the value of your strong US\$ dollar. \$1,000 CDN is equivalent to \$750 USD.*
We will also look after doing all testing required to get your purchases across the border.*



PREMIER & GUESTS

Falls View

PRODUCTION
SALE

VOLUME III

DECEMBER 30, 2020

PREMIER LIVESTOCK
7:00 PM • MILVERTON, ON

Sale Day Information

SALE STAFF

Auctioneer, Chris Poley	306-220-5006
Ringman, Shane Michelson	403-363-9973
Ringman, Ben Wright	519-374-3335
Ringmen, Carl Wright	519-369-7489

Peter Frijters	519-276-9314
Mark Shologoan	780-699-5082
Ryan Wernicke	815-739-7754
Billy Elmhirst	705-761-0896

INSURANCE

Insurance will be available sale day.

HOTEL INFORMATION

Best Western Plus The Arden Park Hotel
552 Ontario Street, Stratford, Ontario
519-275-2936

SALE LOCATION

5164 Line RR 2, Milverton, ON

CATALOGUE DESIGN



VIEW THE CATALOGUE ONLINE AT:
WWW.BUYAGRO.COM

WATCH & BID ONLINE...

Internet Bidding Available

DLMS
www.dlms.ca

For more information call DLMS:
Mark Shologan 780.699.5082 or
DLMS Purebred Team 780.991.3025



From the desk at T Bar...

Falls View volume 3 has become a sale where rarely available genetics are offered from some of North America's best. Last years event will be one we will never forget and while we may not be able to be beside the falls this year, rest assure the quality and popularity of this event has never been so high!

Peter Frijters and his crew overwhelmed the Eastern part of this country this past fall with an incredible junior show put on here at his own farm. The work and dedication his family have thrown into the livestock industry needs to be commended. His outside the box thinking is contagious and his offering in this year's volume 3 is exceptional. The heifer calves on offer are specifically held for this featured event. Sought after genetics that have a desired look we all dream of breeding. A select group of breds that have a huge future of return on your initial investment. Picks of programs that are in the forefront of their respective breeds along with flushes that can set your operation forward. Semen opportunities that leap a program years in advance and embryos that carry a sense of pride to own. All in all the homework has been evaluated and completed in this sale.

All of us at T Bar C are proud to be involved in a sale of this magnitude. Please make plans at anytime before the sale for viewing or plan to attend the live auction event right at Premier Livestock. Hotels and amendments are just a mere 20 minutes away from the sale site.

Lastly I would like to leave you with this in mind. Now more then ever we have seen an ever growing appetite for quality livestock and respect of the ag sector. This will not go out of style. Once we get back to some sort of normalcy I truly believe we will see even more growth around not only the agriculture community but even more around high quality livestock. In our minds sales like this are a way you can obtain genetics to be ready for a future full of excitement that we will all be able to reap rewards!

As always please don't be afraid to contact any of us at T Bar and we wish you all the best over the holidays.

BEN WRIGHT



SALE MANAGEMENT

T Bar C Cattle Co. Ltd.
Box 2330, Warman, SK S0K 4S0
Office: 306-933-4200
Fax: 306-934-0744
info@tbarc.com
www.tbarc.com



CHRIS POLEY
306-220-5006



SHANE MICHELSON
403-363-9973



BEN WRIGHT
519-374-3335

Schedule of Events

December 30

4:30 PM

Viewing of Cattle on display

5:00 PM

Appetizers and Cocktails

7:00 PM

Sale Time

9:00 PM

Entertainment and Social





1

10 PACKAGES OF TEN (10) UNITS OF SEMEN

OHL GUNNER 7263G

7263G AAA 19651047 FEB. 27, 2019

BW	WW	YW	MILK	CE
2.7	85	138	30	8

CONNELY CAPITALIST 028

S LD CAPITALIST 316

LD DIXIE ERICA 2053

PLUM CREEK REFRESH 561A

D LAZY H BAR FOREVER LADY

LAZY H BAR FOREVER LADY

When our good friends Wayne and Barb Olrich sent me the picture of OHL Gunner we knew we needed to follow up. Rob and I made the drive to Nebraska just to see the bull and his dam, and to say the least it was a worth-while drive. Gunner is a moderate framed bull who is a very unique individual in-terms of combining explosive muscle, he's massive thru the center portion of his body and the way he comes out of the top of his shoulder into his front is truly impressive. We were very impressed with his dam, she raised Gunner as a two-year-old and did a great job making him the highest indexing calf of their 2020 crop. When you analyze his data set he boasts a WW that puts him in the 1% of the breed and YW in the top 3% along with an incredible claw and angle EPD which is hard to find! When we find one built like Gunner and backed by a dam like his along with his EPD profile we knew we had to dig in and own him. Here's your opportunity to share in what we feel is going to be a very versatile sire, be prepared to have the phenotype that will demand you hang a leather halter on them. Or if you're looking to make a set of replacement heifers to make cows or bulls that have that extra muscle that sell to the commercial guy we are confident Gunner will fit your needs.



Mich Wheatland Hicaliber 7197E
Sire



Premier NP Pride 729
Maternal Sister

2

PREMIER PRIDE 015

PLS 015H 2151594 FEB. 11, 2020

BW	WW	YW	MILK	CE
3.5	50	83	24	2.0

EXAR CLASSEN 1422B

S A V NET WORTH 4200

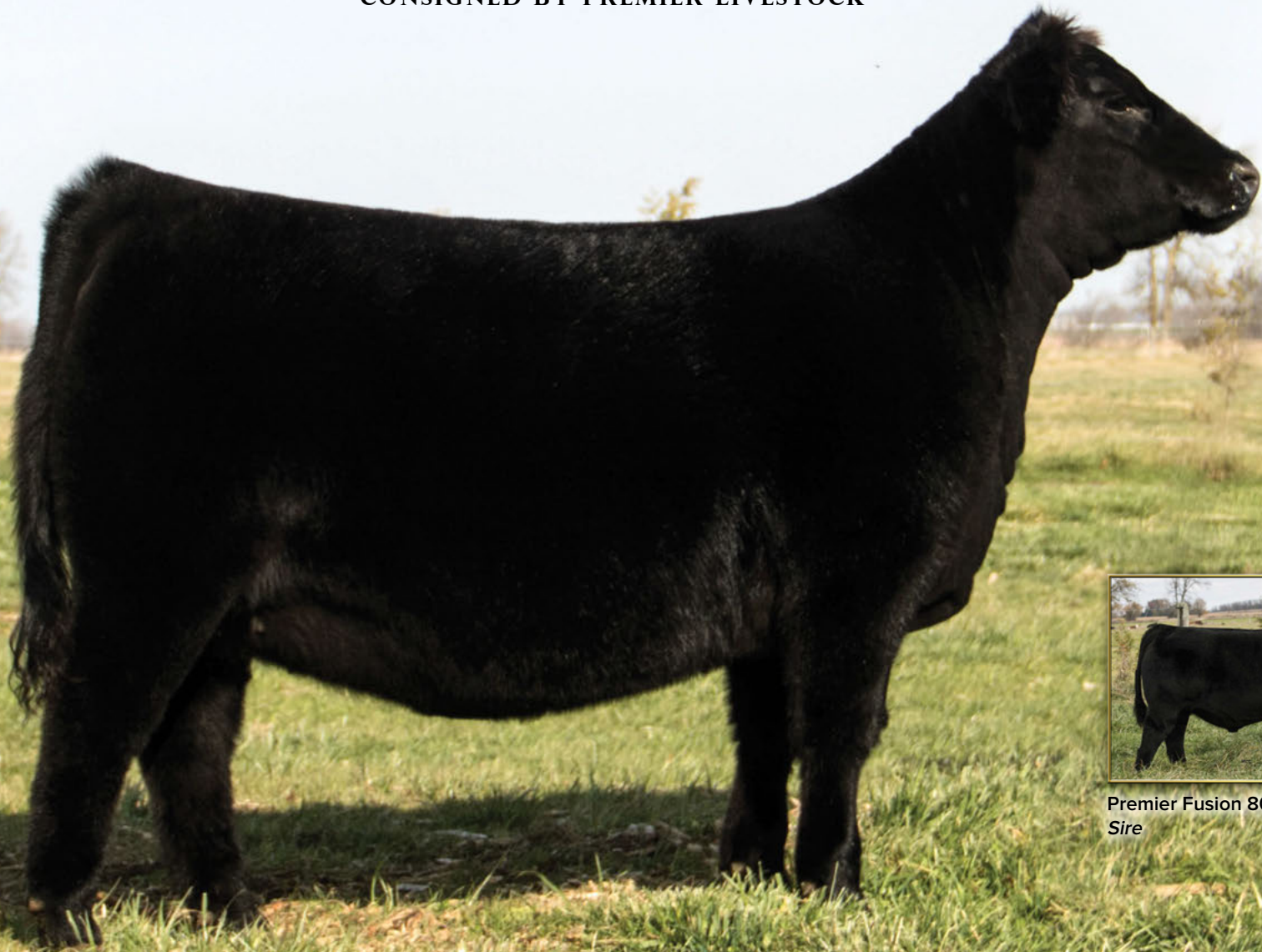
S MICH WHEATLAND HICALIBER 7197E D PREMIER NP PRIDE 432

EXAR HIGHROSE 84026

BABY BLACK LOOKIN GREAT

BW: 70 lbs.

I think it's safe to say 015H has captivated the attention of all our visitors this year. Pride 015H is sired by the 2019 Champion Angus and Supreme Champion bull of the 2019 RWF HI Caliber. Her dam is a highly productive daughter of S A V Net Worth that stems back to the great Pride family. Another daughter, PLS 729E, was a sale feature in the bred heifer division of the 2018 Falls View sale. Here's one that we think will be ultra competitive in 2021, this female is so correct in her design. She is extremely fluid in her mobility for one that is as wide based as she is. She's a very long spined female with a beautiful front third. Heifers like this one are hard to find! We at Premier Livestock would be more than excited to work with the new owners in campaigning this female in 2021 and beyond.



Premier Fusion 809F
Sire

3

PREMIER QUEENETTE 20H

PLS 20H 2151581 FEB. 28, 2020

DAMERON FIRST IMPRESSION

5T POWERCHIP 4790

S PREMIER FUSION 809F

D GF QUEENETTE 24F

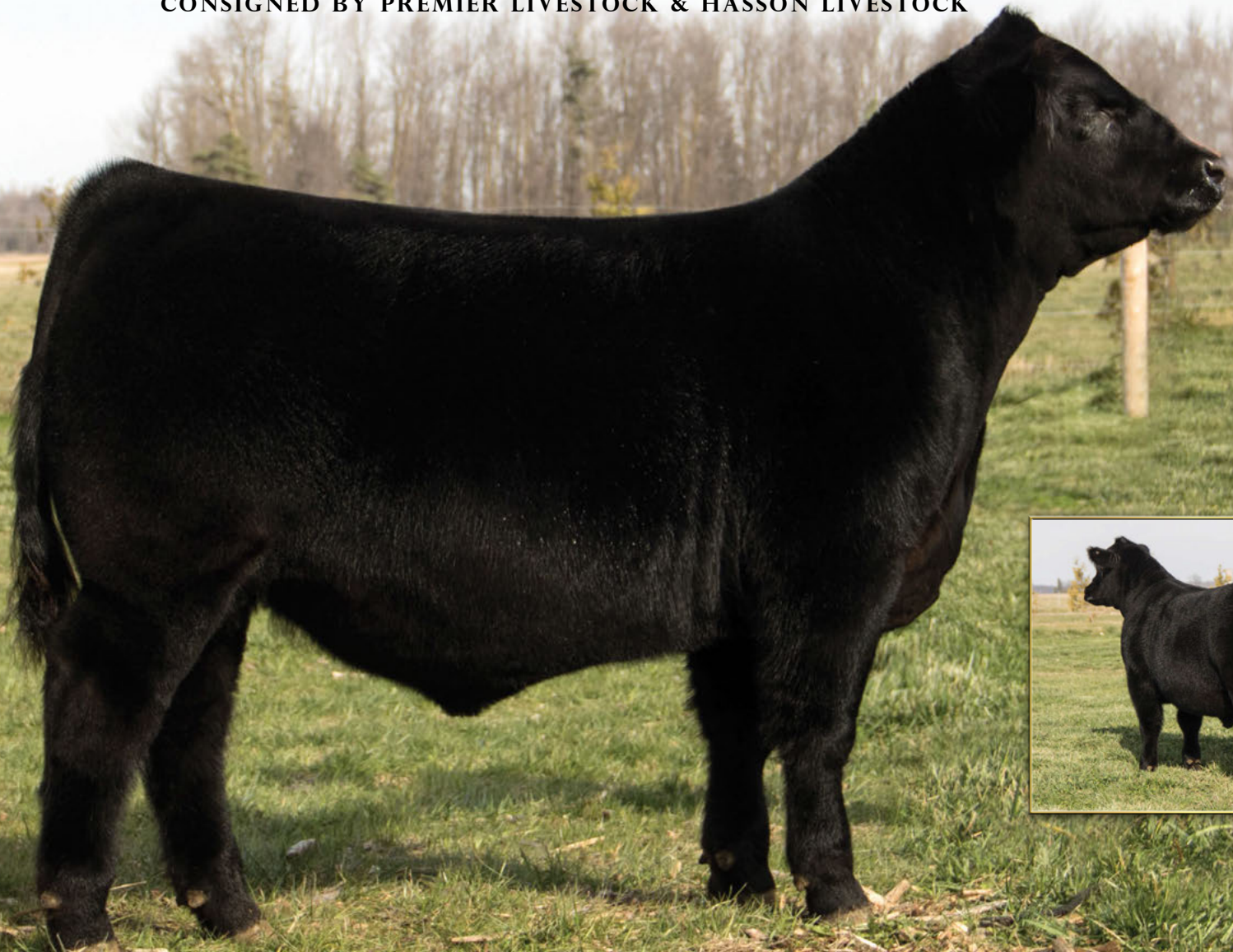
PREMIER GEORGINA 421

WHISKEY LANE QUEENETTE 24C

BW	WW	YW	MILK	CE
1.7	50	83	19	-

BW: 64 lbs.

This one has the WOW factor! If you like being at the centre of attention you will want to be on the end of the halter when this one hits the ring. 20H is by no means the biggest one in-terms of frame size, but she will rival many when we start to talk about muscle shape and depth of body. She is extremely elegant out thru her front end. 20H's sire was the feature bull of the inaugural Falls View Sale Premier Fusion who sold to the good herd of LLB angus in Alberta. Watching this bulls calf crop develop has been very exciting. Her dam is a beautiful uddered well made 5T Powerchip. Added bonus this one is very quiet and loves the attention show heifers get!



4A

PREMIER RIP 29H

PLS 29H 2151583 APR. 2, 2020

BW	WW	YW	MILK	CE
2.6	52	92	23	-

DAMERON FIRST IMPRESSION

S PREMIER FUSION 809F

PREMIER GEORGINA 421

B C LOOKOUT 7024

D PFLC BARDETTA 38B 1809478

PRIMETIME'S 31H BARDETTA 549

BW: 74 lbs.
 Again for 2020 we felt it was fitting to present what we feel is a stand out bull calf of the 2020 crop Rip has all the pieces to be an impact sire, it all starts with his dam 38B she is one of the most powerful lookout daughters on the farm an is back by the famed Bardetta cow family. Her length and depth of body are truly impressive, she has an udder that even a dairy farmer would die for! 29H's sire was the feature high selling bull calf of the 2018 for Falls View Sale where Premier Fusion sold 1/2 interest to LLB Angus. Fusion first calf crop is one of the most exciting we have seen to date. Rip holds true to his impressive lineage when you stand back and look at him he's wide based deep bodied and has a presence that commands your attention while maintaining the structure and foot that lends to mobility and longevity. Selling half interest. We look forward to working with the new owners.



4B

PREMIER **BARDETTA** 36G

PLS 936G 2180262 APR. 21, 2019

CONNELY FOREFRONT

B C LOOKOUT 7024

S TC FREEDOM 104

D PFLC BARDETTA 38B 1809478

T C RUBY 9095

PRIME TIME'S 31H BARDETTA 549

BW	WW	YW	MILK	CE
2.9	43	74	24	5.5

BW: 64 lbs.

Some may say this pedigree is a little old school. But in this case just like a vintage wine it just gets better and better. Bardetta 936 is a maternal sister to Premier Rip (Lot 4) and a direct daughter of the legendary TC Freedom who was well known to produce wide based easy fleshing cattle that have great feet and legs. Combine that with her maternal line and the great BC Lookout bull and the opportunities for greatness are endless. 936 resembles her dam in many ways, she's long sided, deep bodied and built the way you like them. Being a Bardetta you can bet she will lay down a picture perfect udder. She carries the exciting first service to OHL Gunner, the Capitalist 316 son that we feel combines the look we are after with a tremendous EPD profile.

AI bred to OHL Gunner on May 21, 2020. Due to calve February 28, 2021.



Bar-E-L Natural Law 52Y
Sire of Embryos

4C

PACKAGE OF FOUR (4) EMBRYOS

BAR-E-L NATURAL LAW 52Y X PFLC BARDETTA 38B

PE	BW	WW	YW	MILK	CE
	3.1	45	79	22	5.0

S A V BISMARCK 5682

S BAR-E-L NATURAL LAW 52Y 1629829

BAR-E-L MAGNOLIA 143K

B C LOOKOUT 7024

D PFLC BARDETTA 38B 1809478

PRIMETIME'S 31H BARDETTA 549

Opportunity Knocks! The Bardetta cow family has been a staple for our programs. They are just the kind that get it done year after year! 38B is sired by BC Lookout, her dam is the original Bardetta cow I purchased in 2006. Since that day the influence of this cow has impacted herds all across the country. The ability of 38B to breed on is very apparent when you see her son Rip 29H and her daughter Bardetta 936G both in the sale! 38B herself was Intermediate Champion Female of the 2015 RWAFF. The highly sought after and now deceased, exciting mating sire to these embryos is quickly building a reputation for siring cattle that are super correct as far as structure and build goes. They are stout made and with tremendous feet. Dig into an exciting mating from the heart of our program!

Guarantee two (2) 60-day pregnancies if impanted by a certified embryo technician. Embryos are exportable to the US.



5

PREMIER **MERCEDES** 923G

PLS 923G APPLIED FOR FEB. 13, 2019

BW	WW	YW	MILK	CE
1.4	56	97	22	6.3

LD CAPITALIST 316

S MUSGRAVE 316 STUNNER 1995252

MCATL BLACKBIRD 831-1378

B C LOOKOUT 7024

D FLC MERCEDES 47E 2014555

HIGHGROVE N W COVERGIRL 2W

BW: 74 lbs.

Mercedes 923 is a daughter of the very popular Musgrave 316 Stunner bull and out of a very productive Lookout x Net Worth cow. She is one that has cow power written all over. She is elegant fronted, deep and roomy through the centre part of her body and has the muscle shape and dimension that makes her a donor cow prospect. She carries the service of OHL Gunner, should make for an exciting calf

AI bred to OHL Gunner on April 13, 2020. Due to calve January 13, 2021.



6

PREMIER **GEORGINA** 99G

PLS 99G APPLIED FOR NOV. 19, 2019

PE	BW	WW	YW	MILK	CE
2.5	51	91	24	2	

S A V BRILLIANCE 8077

S **PVF INSIGHT 0129** 1703597

PVF MISSIE 790

DAMERON FIRST IMPRESSION

D **VOYAGER GEORGINA 416** AAA 18611790

Q V S GEORGINA T412

BW: 85 lbs.

99G is an extra aged royally bred female, being sired by PVF Insight an out of a beautiful Dameron First Impression cow and then the famous Saugahatchee sire! Talk about a sire stack, combine all that with the Georgina cow family and its easy to see why 99G will be an impact Female in the most discriminating of herds. This is the same cow family that Premier Fusion descends from. You will admire 99G's overall balance and structure. She has the style and presence that the Insight cattle are so well know for. We are retaining a full sister to this heifer that we are really excited about!



OSU EMPRESS 8143



POSS RAWHIDE

7A

**PACKAGE OF THREE (3)
EXPORTABLE IVF EMBRYOS**
POSS RAWHIDE X OSU EMPRESS 8143

PE	BW	WW	YW	MILK	CE
0.3	68	122	27	9	

POSS MAVERICK

CONNEALY CONFIDENCE PLUS

S POSS RAWHIDE AAA 19416968
POSS BLUEBLOOD 6502

D OSU EMPRESS 8143 AAA 19036610
OSU EMPRESS 5102

7B

**PACKAGE OF THREE (3)
EXPORTABLE IVF EMBRYOS**
POSS RAWHIDE X OSU EMPRESS 8143

PE	BW	WW	YW	MILK	CE
0.3	68	122	27	9	

POSS MAVERICK

CONNEALY CONFIDENCE PLUS

S POSS RAWHIDE AAA 19416968
POSS BLUEBLOOD 6502

D OSU EMPRESS 8143 AAA 19036610
OSU EMPRESS 5102

“Empress 8143” is an exciting young Confidence Plus donor from the time-tested Empress family from the OSU program in Oklahoma. She brings to the table all the qualities we look for in a foundation female. When we evaluate donors for our program, we look for attractive and functional phenotypic traits, fertility and most of all, the ability to transmit quality into their progeny. Her first calf by Ashland is a fine example of a female “outproducing herself”. OSU liked that calf so much, to retain her influence in their program, they flushed her before offering her for sale. We mated her to the \$140,000 ST Genetics sire, Poss Rawhide, who is already known for his unique phenotype, foot quality, superior performance, and index merit. We are excited to offer you a chance to get in on the “ground floor” on this foundation donor and access an exciting young sire that is not widely available in Canada. Guaranteeing one pregnancy if implanted by a certified embryo technician. Stored at Flying Cow Genetics, Welch, OK.



Conley South Point 8362
Sire of Embryos

8

PACKAGE OF FOUR (4) EMBRYOS

CONLEY SOUTH POINT 8362 X PREMIER HASSON EMPRESS 714

PE	BW	WW	YW	MILK	CE
1.0	51	86	26	9.8	

STEVENSON TURNING POINT
S CONLEY SOUTH POINT 8362 2099027
P R LADY 909 4200-587

B C LOOKOUT 7024
D PREMIER HASSON EMPRESS 714 2070161
OSU EMPRESS 3100

Empress 714E has made the sale catalogue three years in a row. In 2018 she was the feature bred female were she sold to Windulan Cattle Company then in 2019 embryos sold to the good herd of Ellsmere Farms in Nova Scotia. 714 is what we feel the next step of the great OSU Empress 3100. She is massively constructed female with an picture perfect udder and has the look to be a impact female as her Dam was for so many different outfits. When I saw Conley South Point at the 2019 CWA in Wilbar's string i thought to myself, we need to use this bull on the Empress line of cattle! He then went on to be Champion Angus bull at CWA as well as the super bowl of cow shows the NWSS in Denver Colorado for Wilbar, Poplar Meadow Angus and Conley Cattle. Here is an opportunity you dont want to miss! I think this mating will produce great ones!
Guarantee two (2) 60-day pregnancies if impanted by a certified embryo technician. Embryos are exportable to the USA.



PVF Blacklist 7077
Sire of Embryos



Mc Cumber Tribute 702
Sire of Embryos

9A

THREE (3) EXPORTABLE SEXED FEMALE EMBRYOS

PVF BLACKLIST 7077 X NORTH PERTH BARBARA 751

PE	BW	WW	YW	MILK	CE
4.5	56	100	20	-1	

PVF INSIGHT 012

S A V 004 DENSITY 4336

S PVF BLACKLIST 7077 AAA 18944889
PVF BLACKBIRD 307

D NORTH PERTH BARBARA 751 2017514
NORTH PERTH MISS BARB 232T

9B

PACKAGE OF THREE (3) EXPORTABLE EMBRYOS

MC CUMBER TRIBUTE 702 X NORTH PERTH BARBARA 751

PE	BW	WW	YW	MILK	CE
1.7	49	96	27	5.5	

MC CUMBER TREMENDOUS 2008

S A V 004 DENSITY 4336

S MC CUMBER TRIBUTE 702 AAA 18844381
LASSIE 113 OF MC CUMBER

D NORTH PERTH BARBARA 751 2017514
NORTH PERTH MISS BARB 232T

"751" was the high selling Barbara from the North Perth Dispersal and our selection to carry on the Barbara legacy. The combination of "Density" with "Barbara 232" has proven to be a recipe for success. Flush sister "Barbara 300" has been successful donor for the Miller's of Kerwood, ON with her embryos highlighting last year's Falls View Sale. She also produced the many time champion and Canadian Show Female of the Year, "Barbara 507", made famous by Merit Cattle Co. in Radville, SK. A flush brother was also selected as the top selling bull in the North Perth Dispersal by Mainstream Genetics of Watrous, SK. "Barbara 751" will see influence South of the border in coming years, as we welcomed Wernimont Farms of Auburn, IA to the ownership group earlier this year. For this offering, we mated her to "PVF Blacklist" and "Tribute". "Blacklist" is a sire admired for his unique combination of performance and presence. We expect him to transmit stoutness, rib shape and dimension into an attractively balanced package. "Tribute" brings an outcross pedigree loaded with maternal excellence, performance, calving ease and efficiency. Perhaps the most appealing part of Tribute is his Pathfinder dam and granddam, who both have impeccable udders and exhibit the fleshing ability we all strive to produce. We expect this this mating to produce foundation progeny for the next generation of the Barbara family. Guaranteeing one pregnancy if implanted by a certified embryo technician. Stored at Boviteq in Saint Hyacinthe, PQ.

CONSIGNED BY POPLAR MEADOWS ANGUS



NATURAL LAW DAUGHTER



NATURAL LAW DAUGHTER



EXECUTIVE DECISION DAUGHTER



SILVEIRAS STYLE DAUGHTER



SOUTH POINT DAUGHTER



EXECUTIVE DECISION DAUGHTER

10

OFFERING PICK OF THE POPLAR MEADOWS 2021 HEIFER CALVES

ALL PICTURED FEMALES BORN AT POPLAR MEADOWS ANGUS

Poplar Meadows Angus is very pleased to have been asked to participate in the Premier & Guests Falls View Production Sale. We have decided to offer pick of our 2021 heifer calves. There will be no heifer calves off limit and we should have a 150 or more to choose from. We implanted 50 embryo's this past spring. Our cow herd is very maternal based and we AI breed cows for the first 30 days. We will have heifer calves from the following bulls next spring: PM Executive Decision, Bar-E-L Natural Law, May-Way Breakout, Conley South Point, Paintrock Trapper, McCumber Tribute, Greenwood Gunslinger, Ellingson Profound, Silveiras Style 9303, DMM International 54D, Coleman Bravo, EF Colossal, Chestnut Turning Heads 29, PM Canadian Outlaw, PM Bravo 83'19, PM Bravo 79'19, OCC Legacy 839L, SAV Renovation, Musgrave Sky High, PM Journey 522, Brooking Firebrand, Peak Dot Pioneer 124B, Remital Desire, PM Cutting Edge 133, JSAR Dodge the Bullet, PM Bank Note 81'19, PM Payweight 61'19 and I'm thinking I may of missed a few. As you can see, we will have everything from a fancy show heifer to a future donor (hopefully all in one package). We would like the decision made on a heifer calf prior to August 13, 2021 so we can make decisions for our fall sale. If you give me 2 weeks notice, I'll book a flight for 2 people from anywhere in North America to come make your decision. We have accommodations and maybe you might get to experience a jet boat tour with Monty.



5T Power Chip 4790
Sire

11

GF **LADY** 37H

GF 37H APPLIED FOR FEB. 25, 2020

EXAR BLUE CHIP 1877B

S 5T POWER CHIP 4790 1959039

DEER PARK TEBOW 5Z

D GF LADY 295C 1850267

5T MISS WIX 8002

GF LADY 295A

BW	WW	YW	MILK	CE
2.7	62	95	17	4.5

BW: 86 lbs.

Here is a very elegant heifer calf that we are proud to have the opportunity to raise and offer for sale. Sired by the very popular 5T Powerchip who has been making rock solid progeny that have balance and depth of body in an attractive package. This heifer is exactly that, she balances well and possesses a deep rib and increased capacity that we like to see in females as they mature and begin to enter production. Lady traces back to the esteemed cow family that Johnson Livestock has done so well with and is as gentle as they come. This would be an excellent project for a you angus enthusiast and we would be happy to help out along the way.



Curraghdale Blackbird 26D
Dam



Schiefelbein Attractive 4565
Sire

12

WHISKEY LANE **BLACKBIRD** 22H

WLL 22H 2138285 JAN. 21, 2020

BW	WW	YW	MILK	CE
1.8	59	105	30	6.0

JMB TRACTION 292

S SCHIEFELBEIN ATTRACTIVE 4565 1938699 **D** CURRAGHDALE BLACKBIRD 26D 1900009

FROSTY ANSWER 3979

COLE CREEK CEDAR RIDGE 1V

CURRAGHDALE BLACKBIRD 29B

BW: 80 lbs.

You will be blown away when you set your eyes on this Attractive heifer calf! 22H is the complete package, she is deep sided with a beautiful sweep to her rib, she has extension in her front end that demands your attention, she is sound footed and moves like a cat and reads like a dream! Whether your plan is to hang a halter on this one or simply admire her in the front field, 22H will accomplish both with ease.



North Perth Barbara 300
Dam

13A

MILLER HARLOW BARBARA 1H

ML 1H 2181003 JAN. 2, 2020

PE	BW	WW	YW	MILK	CE
3.3	57	93	20	1.0	

DAMERON FIRST CLASS

S EXAR BLUE CHIP 1877 1886429

GREENS PRINCESS 1012

S A V 004 DENSITY 4336

D NORTH PERTH BARBARA 300 1759421

NORTH PERTH MISS BARB 232T

This big stout hairy individual has all the credentials to make a top end female in any herd . Her wide top and attractive head will make you look more then once at her. Her pedigree is stacked and is what I consider "essential " in this day and age. Blue chip insures not only quality but huge middled , soft look with an abundance of power. Her donor dam Barbara has hit another home run with this mating as she can be mated to any bull on the planet and have admirefull offspring.



North Perth Barbara 300
Dam

13B

MILLER HAZEL BARBARA 5H

ML 5H 2181001 FEB. 24, 2020

SMA WATCHOUT 482

S A V 004 DENSITY 4336

S CONLEY EXPRESS 7211 2136235

D NORTH PERTH BARBARA 300 1759421

DPL SANDY 3040

NORTH PERTH MISS BARB 232T

PE	BW	WW	YW	MILK	CE
2.3	52	86	21	1.5	

From our donor powerhouse Barbara is this stunning Express heifer that represents the freshest genetics available on the continent. Express himself is noted for that extra look and dimension matched with our Barbara cornerstone that traces back to the maternal giant Density. The future ahead of this young female is bright and will carry on this prolific cow family for many years to come. Her added length while maintaining a stout base in a attractive look with garnish attention no matter what angle you witness her from.



PM ECHO 8'16



COLEMAN BRAVO 6313



S A V AMERICA 8018



S A V RENOWN 3439

14A

OFFERING PICK OF THE 2021 PM ECHO 8'16 EMBRYO CALVES

We believe the "Falls View Sale" is one of the most prestigious sales to consign to and we are always excited as we consider what genetics from our program will best represent us. This year on the Angus side we are focusing on PM Echo 8'16. The first Echo 8'16 lot is a shot at our 2021 born ET calves and we believe it will be an exciting pick as you select from SAV America, Coleman Bravo and SAV Renown calves. Get in on the chance to own genetics off the RBC Supreme Champion Female.



14B OFFERING THE RIGHT TO IVF FLUSH
PM ECHO 8'16

BW	WW	YW	MILK	CE
3.3	49	91	32	3.0

S A V BISMARCK 5682
S BAR-E-L NATURAL LAW 52Y 1629829
 BAR-E-L MAGNOLIA 143K

HF EL TIGRE 28U
D HF ECHO 111Y 1627481
 HF ECHO 207N

RBC Supreme Champion female with PM Echo 8D was a great honour. Adding a second Natural Law daughter to the donor pen was very exciting and the prospects of sharing these genetics with the world is the icing on the cake. Take this opportunity to flush the RBC Supreme Champion Female to the sire of your choice and set your program apart from the breed.

CONSIGNED BY JAYMARANDY LIVESTOCK



YOUNG DALE GRACE 169B
- 3 DAUGHTERS ON OFFER



JAYMARANDY GEORGINA 908G
- 1 MATERNAL SISTER ON OFFER



JAYMARANDY GRACE 4H
- DAUGHTER OF 169B ON OFFER



JAYMARANDY MS. MORRISON 5H
- ON OFFER



JAYMARANDY COPENHAGEN SMILE 6003D
- SEVERAL DAUGHTERS ON OFFER



JAYMARANDY FREESTYLE 809F
- DAUGHTER ON OFFER

15

**OFFERING PICK OF THE JAYMARANDY LIVESTOCK 2020 CALENDER YEAR
SINGLE OWNED HEIFER CALVES**

It is with great pleasure that we consign to the Premier and Guests Falls View Event again this year. This event has been an annual event for us and we certainly appreciate Peter and the T Bar C crew for welcoming us again. This is a lot that we have great confidence in as our heifer calf pen is incredibly strong this year and this will be the only opportunity to purchase from this group until fall of 2021. Leading off the offering are 3 daughters of the ultra competitive and great production cow Young Dale Grace 169B. This cow's production gets better and better every year she produces. She is a strong donor, was an elite show cow and has produced cattle for cowboy and show programs alike. She has production valuation of over \$80,000 dollars and is just 6 years old. The offering includes a maternal sister to our newest donor pen addition, Jaymarandy Georgina 908G. Additionally, an own daughter of our standout female producer and maternal sister to Grace 169B, Young Dale Grace 102Z. If this cow had not lost a portion of her tail I would take her out into the mature cow ring any day and she would be as competitive as her sister ever was. The pen includes a beautiful March daughter of Young Dale Tibbie 724E who is a maternal sibling to the great Young Dale Xcaliber. So few of those maternal sibs are in the herd book and they are incredibly well accepted in the industry. Lastly, the new to us cow family of Ms. Morrison cattle has one of the top heifers in the pen that makes friends on every visit to the farm.

The bulls on the sire side include our home raised sires Jaymarandy Copenhagen Smile 6003D, Jaymarandy Freestyle 809F. Also included are Musgrave 316 Stunner and Brooking Firebrand 6068. Copenhagen Smile has put together back to back heifer pens that are incredible in phenotype and excel numerically. Jaymarandy Freestyle is a strong phenotype sire with our top indexing heifer calf-the previously mentioned March Tibbie. The pre Covid plan was to attend Denver with 2 pens of heifers, one built of 169B daughters and one built from Copenhagen Smile daughters. All members would have been either a Stunner or a Copenhagen Smile. We are excited to present this offering up to the industry and look forward to your interest. Jaymarandy Livestock is active in the show ring, thus, is willing to assist any junior purchaser of this offering to show the selection at Showdown 2021 in Brandon Manitoba.

Selection needs to be made prior to March 1/2021. Jaymarandy Livestock reserves the right to 6 #1 embryos from the chosen heifer and will work with the new owner in managing this in the most appropriate manner.



Justamere 40 M.A.G.A. 105D
Sire

16

VLS MS DALLAS 654H

VLS 654H 2154353 JAN. 1, 2020

BW	WW	YW	MILK	CE
-0.4	45	79	25	6.5

EXAR PAY STUB 40 5S

S JUSTAMERE 40 M.A.G.A. 105D 1930939

EXAR MISS BARBARA 1075

CONNEALY CONSENSUS 7229

D VAN ESSE MS DALLAS 65C 1832702

LLR MS. DALLAS 878 6W

BW: 62 lbs.

VLS Ms Dallas 654H has been a crowd favourite with everyone touring the farm since day one. She is long-spined, deep bodied and maternal, standing on an excellent set of feet and legs. Her now deceased sire, Justamere M.A.G.A., has passed on great numbers, style and power. She has been shown in the virtual shows and has the potential to be a great cornerstone in any herd, as well as a junior project.



S A V America 8018
Sire of Pregnancy

S A V Blackcap May 273

17

PREGNANT PUREBRED ANGUS RECIP CFL 15D
S A V AMERICA 8018 X S A V BLACKCAP MAY 273

PE	BW	WW	YW	MILK	CE
	3.5	70	122	23	1.0

S A V PRESIDENT 6847

S S A V AMERICA 8018 2161873

S A V MADAME PRIDE 0075

S A V 707 RITO 9969

D S A V BLACKCAP MAY 273 2014254

S A V MAY 2397

Cuddy Princess 15D is the recipient carrying our heifer pregnancy of the mating of S A V Blackcap May 273 X S A V America 8018. We are grateful that we were able purchased these reverse sorted IVF heifer embryos out of the North Perth Dispersal in 2019. SAV Blackcap May 273 is an elite donor and a maternal sister to the amazing \$9,000,000 producing S A V Blackcap May 4136. A direct daughter of 273 sold for \$300,000 for half interest in 2018. This is a very exciting mating to S A V America 8018 which sold for a record setting \$1.51 million. We anticipate great things for the progeny and future generations of this mating. She was implanted April 6, 2020 and is due January 7, 2021.



S A V BLACKCAP MAY 4563



S A V America 8018
Sire of Embryos



S A V Territory 7225
Sire of Embryos

Proven Pathfinder daughter of S A V Blackcap May 4136, the legendary and all time top producing income cow with 10 million in direct progeny sales. 4563 is a fifth generation SAV embryo donor with exquisite femininity, abundant milk and unmistakable maternal presence with good feet. She earned a weaning ratio of 105 on her first 3 calves. Sunderland Ranch purchased SAV BLACKCAP MAY 4563 as the high selling donor cow at the SAV 2020 sale valued at \$45000.00 USD. We are absolutely thrilled to own her as she is an incredible female to see in the flesh! She will be a cornerstone of our program well into the future. You can view her videos taken this summer on pasture at www.sunderlandranch.net (foot pictures included on the FEMALES page). Visit our Facebook page Sunderland Ranch Ltd and Instagram [sunderland_ranch](https://www.instagram.com/sunderland_ranch) for more videos and pictures of our program.

18A

**PACKAGE OF THREE (3)
GRADE 1 IVF EMBRYOS**

S A V AMERICA 8018 X S A V BLACKCAP MAY 4563

PE	BW	WW	YW	MILK	CE
2.8	69	122	26	-0.5	

S A V PRESIDENT 6847

S A V REVERE 1180

S S A V AMERICA 8018 2069908

D S A V BLACKCAP MAY 4563 2144122

S A V MADAME PRIDE 0075

S A V BLACKCAP MAY 4136

Here is a bull that needs no introduction! He is the 1.51 million world record selling bull in the Angus breed. He has unmistakable herd bull presence and is backed by the maternal matriarch SAV MADAME PRIDE 0075 who served in the SAV program for an incredible 18 years. Proven genetics you can count on. This mating with S A V Blackcap May 4563 is a rare opportunity you don't want to miss out on. Guarantee one (1) pregnancy when implanted by certified embryologist. Embryos collected and stored at Transova, Iowa. Canadian exportable. Embryos are shipped at buyers expense.

18B

**PACKAGE OF THREE (3)
GRADE 1 IVF EMBRYOS**

S A V TERRITORY 7225 X S A V BLACKCAP MAY 4563

PE	BW	WW	YW	MILK	CE
2.5	69	127	26	-0.5	

S A V RESOURCE 1441

S A V REVERE 1180

S S A V TERRITORY 7225 2135885

D S A V BLACKCAP MAY 4563 2144122

S A V EMBLYNETTE 3293

S A V BLACKCAP MAY 4136

Here is a mating to be excited about! S A V Territory 7225 is the greatest son of S A V Resource 1441! His dam S A V Emblynette 3293 by Density is a fifth generation donor and has all the right qualities to make a lasting impression in your program. When using proven genetics you can be confident the outcome will be positive. This mating with S A V Blackcap May 4563 is another special opportunity to invest in some of the best Angus genetics that will propel your program to new heights! Guarantee one (1) pregnancy when implanted by certified embryologist. Embryos collected and stored at Transova, Iowa. Canadian exportable. Embryos are shipped at buyers expense.



S A V 707 Rito 9969
Sire of Embryos

0091

**PACKAGE OF THREE (3) EXPORTABLE
SEXED FEMALE IVF EMBRYOS**

S A V 707 RITO 9969 X NORTH PERTH EMBLYNETTE 107

RITO 707 OF IDEAL 3407 7075

S A V NET WORTH 4200

S S A V 707 RITO 9969 1644747

D NORTH PERTH EMBLYNETTE 107 1640825

BR POLLY 8077-472

S A V EMBLYNETTE 7260

PE	BW	WW	YW	MILK	CE
4.9	59	109	23	-5.0	

"107" was selected, along with our partners at Grist Farm of Orton, ON, as the high selling Emblynette female in the North Perth Dispersal last year. She is a "Canadian Pathfinder" and a direct daughter of SAV Emblynette 7260, representing 5 generations of Pathfinder females. Boasting a calving interval of 350 days in 8 calvings, she recently weaned her 2020 heifer calf at 1025 pounds on October 1st. She has been successfully bred A.I for nine consecutive breeding seasons, always on her first breeding. At nearly 10 years of age, "Emblynette 107" is exactly what we aim to breed for many traits, but especially in terms of fertility and foot quality. She has been flushed only one time and froze 15 reverse sorted Female embryos. We mated her to "9969" to produce full sisters in blood to, arguably the top donor currently in the SAV program, "SAV Emblynette 2369". She is the dam of "Bloodline" the recent high selling bull at the 2020 sale, and high sellers from the 2019 sale, "Emblem" and "Ajax". We consider these embryos extremely valuable and are only offering them for sale as the fairest way to split the 15th embryo in the flush between her owners. Guaranteeing one pregnancy if implanted by a certified embryo technician. Stored at Boviteq in Saint Hyacinthe, PQ.



PM Rosebud 77'15
Daughter of HF Rosebud 103Y

Angela

20

CHOICE OF THREE (3) OR SIX (6) EMBRYOS

SILVEIRAS STYLE 9303 X HF ROSEBUD 103Y

PE	BW	WW	YW	MILK	CE
1.4	44	79	22	7.0	

GAMBLES HOT ROD

S SILVEIRAS STYLE 9303 1597753

SILVEIRAS ELBA 2520

HF TIGER 5T

D HF ROSEBUD 103Y 1627474

HF ROSEBUD 94P

This will be the last embryos offered on the great Rosebud cow. We unfortunately lost her this past summer. (just another reason to hate 2020) Rosebud is well know by her most famous daughter to date PM Rosebud 77'15 who was successful campaigned by the Morasch family with win highlights of Supreme Summer Synergy in Calgary and top 10 finalist at Agribition as a 2 year old. This past spring Chad Tuck of CMT sold 2 sons of 103Y for \$28,500 and \$26,000. There are several more offspring that will definitely make themselves know in the coming years. The mating is to one of the most prolific sire's in the show world. No other sire has claimed more champion titles in the last 9 years. I firmly believe the phenotype on this mating will be outstanding. I have already implanted a few of these embryos and can hardly wait for them to arrive. Qualified for Canada and USA. Embryos are stored at Bow Valley Genetics.



KR LADY MAY 4382



Musgrave Blackcap 834-510
Daughter of Musgrave Boulder



Musgrave Boulder
Sire of Pregnancy

21A

OFFERING THE RIGHT TO FLUSH

KR LADY MAY 4382

BW	WW	YW	MILK	CE
1.7	59	113	38	6.0

PINE RIDGE HAMMER S322

KOUPALS B&B IDENTITY

S KR GAVEL 1057 US17017988
WK MISS 6191

D WK LADY MAY 2347 US17350640
THOENE TRAVELER 004-563

KR Lady May is calving naturally the first week in January to S A V America and she is back in Canada and looks awesome to say the least! The reports are coming in on the first calves and she is out producing herself will producing the lead off bull in Krebs Ranch carload in Denver to a outstanding Basin Payweight 1682 heifer at Norfolk Cattle Co. a VAR Power Play Bull and a Capitalist 316 heifer stand out at Greenwood Angus. 10 outstanding Basin Payweight 1682 calves at Brian Jurke's. 4 stand outs at Pahl's Livestock in Medince Hat Alberta! With many calves to come this spring KR Lady May 4382 is proving herself as an Elite Donor. Sexed female Density semen is available for the flush, should the buyer choose. Gaurantee of 6 embryos. Flushing expense is the responsibility of the buyer.

21B

PREGNANT RECIPI WITH SEXED FEMALE EMBRYO

MUSGRAVE BOULDER X KR LADY MAY 4382

PE	BW	WW	YW	MILK	CE
	1.7	57	108	40	5.0

HOOVER DAM

K R GAVEL 1057

S MUSGRAVE BOULDER 1730433
MILL BRAE SA JAUNTY 3079

D KR LADY MAY 4382 2132185
WK LADY MAY 2347

This is one of my favourite matings for a heifer pregnancy that has the potential to make a great donor cow. After being at Musgrave's Angus operation and seeing first hand all the great Musgrave Boulder daughters with perfect feet, udders and longevity raising breed leading herd sires and donor prospects! I believe This mating with KR Lady May 4382 could be one of the all time great mating that will leave depth of body perfect feminine front with a perfect udder! Embryo was implanted May 7, 2020. The recip is a Red Angus Simmental cross cow, and is about 6 years old. This will be her second transplant calf.



5T Power Chip 4790
Sire of Embryos



Full sib to embryos

22

**TWO PACKAGES OF THREE (3)
SEXED FEMALE IVF EMBRYOS**

5T POWER CHIP 4790 X SCC SCH ROYAL BLACKBIRD 824

PE	BW	WW	YW	MILK	CE
2.2	52	85	17	5.5	

EXAR BLUE CHIP 1877B

S 5T POWER CHIP 4790 1959039

5T MISS WIX 8002

SILVEIRAS STYLE 9303

D SCC SCH ROYAL BLACKBIRD 824 2075077

S C C ROYAL BLACKBIRD 502

A really unique opportunity to purchase female sexed embryos by none other than 5T power chip. Resulting progeny will have the look and natural thickness to compete in the show ring and be able to raise the kind that work at home. Royal Blackbirds first calf is nothing short of impressive. Her pedigree is extremely appealing Style x Blackbird 502 who just so happens to be the dam of SCC First N Goal, making Royal Blackbird his maternal sister. The homework is done with these genetics if you like cattle with the look and natural thickness don't pass up on these embryos.

Canadian qualified only. Guarantee one (1) pregnancy if implanted by a certified embryo technician.



YOUNG DALE ANGELINA 15Y



Young Dale Defiance 199F
Sire of Embryos



Musgrave Sky High 1535
Sire of Embryos

23A

PACKAGE OF THREE (3) EMBRYOS

YOUNG DALE DEFIANCE 199F X YOUNG DALE ANGELINA 15Y

PE	BW	WW	YW	MILK	CE
2.3	54	85	22	5.0	

YOUNG DALE HI DEFINITION 185B

S YOUNG DALE DEFIANCE 199F 2062397

YOUNG DALE GRACE 126Z

D YOUNG DALE ANGELINA 15Y 1632326

YOUNG DALE ANGELINA 59W

23B

PACKAGE OF THREE (3) EMBRYOS

MUSGRAVE SKY HIGH 1535 X YOUNG DALE ANGELINA 15Y

PE	BW	WW	YW	MILK	CE
2.0	51	84	18	4.5	

MUSGRAVE BIG SKY

S MUSGRAVE SKY HIGH 1535 1952446

FLAG QUEEN W 00649

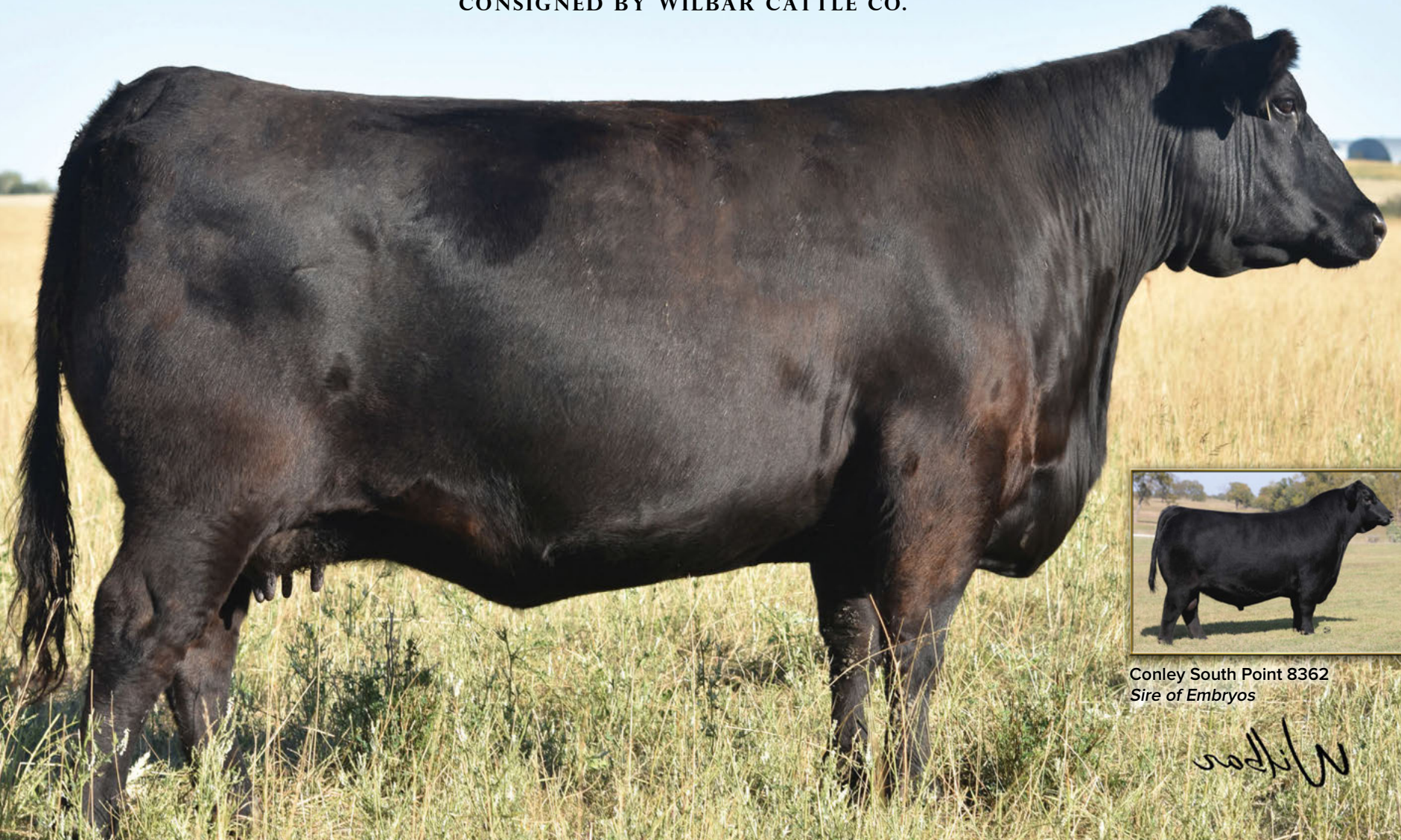
YOUNG DALE BAZAAR 16W

D YOUNG DALE ANGELINA 15Y 1632326

YOUNG DALE ANGELINA 59W

We purchased 15Y as a mature cow in the Young Dale fall female sale a few years ago. The bull calf she had at side that year brought \$20,000 and was part of the Young Dale show string that fall. These will be the first genetics that we will market from 15Y since owning her. You will hear more from her over the next few years. We retained her first calf here by Stunner and then she entered our donor program. 15Y herself is an absolute powerhouse tank of a cow that still moves incredibly well and is hard to pick a hole in. Stout topped, sweet fronted, with tons of middle and sound feet. Give me a call and I'll send you a pasture video of her that will certainly impress. We have a tribe of full sisters to the Defiance embryos born this spring out in our replacement pen. This group proved the consistency of 15Y. Peas in a pod. If there were shows some of these would have made their way to town. The Defiance calves at our place and at Young's this spring were anxiously awaited and did not disappoint. Defiance himself is as stout and correct made as you could want. Much like himself, the calves are sweet fronted with tons of muscle shape and middle. Buy with confidence on this mating. The Sky High mating is one we have a lot of confidence in as well. With the maternal greatness in Sky High's pedigree plus the muscle shape and look he offers we feel this mating could really click. Combining the cow makers Earnan, Density, and Bismark plus the Tibbie cow family, the Flag Queen cow, and the Primrose and Abigale cow family's. This mating could really be exciting.

Gaurantee of one (1) 60 day pregnancy per mating if impanted by a certified vet. Embryos stored at Ranchland Veterinary Services in Carnduff, SK.



Conley South Point 8362
Sire of Embryos

Wilbar

24

PACKAGE OF THREE (3) EMBRYOS
CONLEY SOUTH POINT 8362 X BALDCO EMULOTA 964

PE	BW	WW	YW	MILK	CE
1.6	64	108	29	7.0	

STEVENSON TURNING POINT

S CONLEY SOUTH POINT 8362 2099027
P R LADY 909 4200-587

SITZ TOP GAME 561X

D BALDCO EMULOTA 964 2009119
JMB EMULOTA 013

Emulota 964 was the \$62,000 top seller in the Trowbridge Family & Friends Sale at the 2016 National Western Stock Show to Werner Angus, Illinois. A full brother, JMB Traction 292 is a featured member of the Select Sires AI stud and another maternal brother, Baldco Black Gold, was the \$26,000 featured member of the Beef-360 AI stud. A maternal sister, Baldco Emulota 147E, sold for \$35,000 to Bobcat Angus in Montana. Another maternal sister, Baldco Trowbridge Emulota 684, was selected by Lookout Ridge Ranch for \$24,000 from the Baldco-Tiedemann sale along with an array of other top-selling genetics from this featured cow family. The dam of these embryos, Baldco Emulota 964, is a beautiful cow, massive in shape, exceptional in production with a tremendous EPD profile. The sire of these embryos is well known in the Angus circles as the International Champion, winner of the 2019 Agribition and 2020 National Western Stock Show. Conley South Point 8362 offers exceptional calving ease with head turning profile and presence in his progeny. Look for exciting things to come in 2021 with South Point progeny. This mating offers unlimited genetic potential.



EC SMTCREST EILEENMERE 4566



E&B Plus One
Sire of Embryos



Connealy Dry Valley
Sire of Embryos

25A PACKAGE OF THREE (3) EMBRYOS
E&B PLUS ONE X EC SMTCREST EILEENMERE 4566

PE	BW	WW	YW	MILK	CE
2.6	67	127	29	5.5	

CONNELLY CONFIDENCE PLUS

WMR TIMELESS 458

S E&B PLUS ONE AAA 19196960
E&B LADY 1023 PRECISION 936

D EC SMTCREST EILEENMERE 4566 2169423
SUMMITCREST EILEENMERE 4566

25B PACKAGE OF THREE (3) EMBRYOS
CONNELLY DRY VALLEY X EC SMTCREST EILEENMERE 4566

PE	BW	WW	YW	MILK	CE
4.2	63	116	30	2.0	

HOOVER NO DOUBT

WMR TIMELESS 458

S CONNELLY DRY VALLEY AAA 18533906
BECCA OF CONANGA 1617

D EC SMTCREST EILEENMERE 4566 2169423
SUMMITCREST EILEENMERE 4566

Featuring two sets of embryos from the top selling donor of the 2018 Lonesome River Ranch Sale, Eileenmere 4566 sired by the popular Byrd Cattle Company and Tailor Made Genetics sire, Plus One and the Express Ranches and Sitz Angus sire, Dry Valley. Eileenmere 4566 is a second generation Pathfinder dam balanced trait daughter of the outcross sire, Timeless 458 and stems from Pathfinder dam who blends the proven RE sire, Complete and the calving ease and maternal sire, Sleep Easy with the Pathfinder dam, Eileenmere 1C66. Eileenmere 4566 records a WR 3@144 and YR 4@113. Daughters of this powerful productive donor include: Eileenmere 8034, the \$7,500 top-selling open heifer of the 2018 Lonesome River Ranch Sale; Eileenmere 8111, the \$5,500 second high selling open heifer of that offering selling to Crazy K Ranch; Eileenmere 8028 in the Rynearson program; and Eileenmere 8129 and Eileenmere 8024, both replacing their second generation Pathfinder dam in the Lonesome River Ranch Program. Guaranteed one (1) pregnancy per mating if implanted by a certified technician. Embryos are stored at Kirkton Vet Clinic.



S A V RESOURCE 1441

26A 2 PACKAGES OF TEN (10) UNITS OF SEXED SEMEN
S A V RESOURCE 1441
IMP 1441Y 1707295 JAN. 7, 2011

BW	WW	YW	MILK	CE
4.1	69	133	17	1.0

R R RITO 707

S A V 8180 TRAVELER 004

S RITO 707 OF IDEAL 3407 7075 2069908
IDEAL 3407 OF 1418 076

D S A V BLACKCAP MAY 4136 US14739095
S A V MAY 2397

Consigned by Premier Livestock

26C 2 PACKAGES OF FIVE (5) UNITS OF SEMEN
S A V BLOODLINE 9578
9578 AAA 19542324 DEC. 29, 2018

BW	WW	YW	MILK	CE
2.1	66	121	26	0

COLEMAN CHARLO 0256

S A V 707 RITO 9969

S S A V RAINFALL 6846 AAA 17249196
S A V BLACKCAP MAY 4136

D S A V EMBLYNETTE 2369 AAA 17249196
S A V EMBLYNETTE 7566

“Bloodline” was the lead-off and top selling bull from the 2020 sale at Schaff Angus Valley. He possesses as much shape, mass and volume as I’ve seen offered at SAV and his herd bull presence is second to none. “Bloodline” represents the next generation of bulls stemming from his famous sire, “Rainfall” and with an even more impressive EPD profile. His dam, “2369” has risen to the top of the SAV program, already producing other notable sires such as “Ajax” and “Emblem”. We believe “Bloodline” is the top bull to sample from the Schaff program in 2021 and we are excited to offer you this opportunity to purchase semen here in the Falls View.

Consigned by Weber Family Angus



S A V RENOWN 3439

26B TEN (10) UNITS OF SEMEN
S A V RENOWN 3439
IMP 3439A 1887276 JAN. 7, 2013

BW	WW	YW	MILK	CE
2.8	71	127	20	-3.0

R R RITO 707

S A V 8180 TRAVELER 004

S RITO 707 OF IDEAL 3407 7075 2069908
IDEAL 3407 OF 1418 076

D S A V BLACKCAP MAY 4136 US14739095
S A V MAY 2397

Consigned by Premier Livestock



S A V BLOODLINE 9578

CONSIGNED BY SPRING CREEK SIMMENTALS



MBJ 1E



MBJ 3D



MBJ 24C



MBJ 24D



MBJ 27D



MBJ 39C



MBJ 57B



MBJ 58C



MBJ 59C



MBJ 68Z



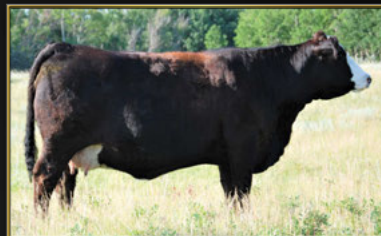
MBJ 91B



MBJ 93D



MBJ 94D



MBJ 99E



MBJ 130B



MBJ 149C

Spring Creek Simmentals is proud to offer the pick of the Simmental heifer calves born in 2020. The sixteen dams above, pictured in pasture condition, all had heifer calves in 2020. There are thirteen embryo daughters of Springcreek Brooke 68Z and Springcreek Abbey 99E. Sires represented include Springcreek Liner 56U, Springcreek Spark Plug, Springcreek Ladies Man, Springcreek Denali, Springcreek Tesla 6E, LFE McDavid 412C, NGDB Structure 34D, WS Proclamation E202, CMS Fireball 813F, Millington Brisk and more. No calves have been selected from this pen for any other reason. Bidders will have access to some of the most proven genetics in the Simmental breed. Bulls from the Spring Creek herd always make up one of the top bull sales in Canada. For further information, please contact Brian at (306) 435-7527. Selection to be made by March 1, 2021

27

**PICK OF THE 2020
HEIFER CALVES**



Black River Ivanka
Maternal Sister



LKCC Bold Venture 194F
Sire

28

BLACKRIVER LATISHA 21H

BRF 21H 1322795 FEB. 26, 2020

BW	WW	YW	MILK	CE
2.2	82.7	114.8	22.3	13.4

WS PILGRIM H182U

S LKCC BOLD VENTURE 194F BPG1276391

MS CRYSTEEL VOLTAGE 194A

MR NLC UPGRADE U8676

D JF LATISHA 1205Y BPTG760890

JF LATISHA 5153R

Black River Latisha 21H is a feature offer straight from the top of our Black River program. A stout made, big bodied female with great hair quality and backed with championship genetics. She comes from an exceptional pedigree, being a maternal sister to the 2019 Royal Grand Champion female, Black River Ivanka 95E. Latisha 21H is the first LKCC Bold Venture 194F female up for auction in eastern Canada. Bold Venture was recently slapped the Grand Champion bull at the Lloydminster Stockade Roundup and was also the sire of the heifer calf in the Senior Champion Cow/Calf pair for New Trend Cattle Co. From his first calf crop the limited number of Bold Venture females have all proven to be very competitive. Latisha 21H is no exception and we are confident that she will go on to produce at the highest level for her new owners.



SON OF MISS R PLUS 3007A

29

THREE (3) EMBRYOS FROM A SPLIT FLUSH

R PLUS 5015C X MISS R PLUS 3007A

PE	BW	WW	YW	MILK	CE
3.2	84.3	129.8	25.2	7.2	

WFL ABSOLUTE 51Y

S R PLUS 5015C BPG1160943

IPU MS.56U LINER 15A

R PLUS HARD ROCK 145X

D MISS R PLUS 3007A BPG805833

MISS R PLUS 1142Y

R PLUS VENOM 4006B X MISS R PLUS 3007A

PE	BW	WW	YW	MILK	CE
3.8	86	130.9	20.4	8.3	

NCB COBRA 47Y

S R PLUS VENOM 4006B PG1134951

IPU MS.TULA 104Z

R PLUS HARD ROCK 145X

D MISS R PLUS 3007A BPG805833

MISS R PLUS 1142Y

A very exciting opportunity here. These embryos will be full siblings to our high selling bull in our 2020 sale or our pick of the herd selection. R Plus Yuma traded to Labatte Simmentals and Circle 7 for \$150000.00. He was sired by the very popular R Plus 5015 bull. The pick of our first calve heifer with calf at side sold to Meadow Acres for \$30000.00, she was a Venom daughter out of the 3007A cow also. The resulting calves from this mating will be Homo Polled, and Red or Black. The 3007 cow is huge barreled and stout a cow you will find. The foot and leg structure will rival with the best in the industry, Barry always comments on the tremendous feet under Yuma. Meadow Acres has added the Venom/3007A daughter into there elite donor program.

Guaranteed one (1) pregnancy per mating if implanted by a certified technician. Embryos are stored at Ranchland Vet Services, Carnduff, SK.



GF Emerald 301E
Dam



GF Sniper 302E
Full brother to dam of Lot 31

30

GF **EMERALD** 301H

GFS 301H APPLIED FOR FEB. 28, 2020

CNS PAYS TO DREAM T759

W/C BULLSEYE 3046A

S LLSF PAYS TO BELIEVE ZU194 BPRS1319524 **D** GF EMERALD 301E BPTG1235006

LLSF URABABYDOLL U194

TNGL EMERALD C851

PE	BW	WW	YW	MILK	CE
	1.2	70.5	103.1	19.2	10.3

BW: 98 lbs.

I get excited every time I look at this female! Here is a Simmental that smashes the mold and has the potential to do some great things in the future. She is as feminine fronted as they come yet possesses that softness we all want in our cow herd. She is a very balanced individual with an abundance of quality hair and when you walk around behind her she is an exceptionally wide pinned thick made female. Her dam has been an outstanding donor for us and we think this female has the potential to even out produce her. A direct Pays to believe out of a bullseye x fortune, stacked pedigree, unparallel look and eye appeal and is a stout featured beast all in one complete package. Selling half interest with the option to double the bid to own all of her.



RED BLAIR'S SCREAM 530E



Sunny Valley Canon 86E
Sire of Embryos



Son of Red Blair's Scream 530E

31A PACKAGE OF FIVE (5) IVF EMBRYOS
SUNNY VALLEY CANON 86E X RED BLAIR'S SCREAM 530E

PE	BW	WW	YW	MILK	CE
3.2	73.6	109.9	29.3	10.7	

STARWEST POL BLUEPRINT

S SUNNY VALLEY CANON 86E P1209434
SUNNY VALLEY TRINITY 53Z

MR HOC BROKER

D RED BLAIR'S SCREAM 530E PTG1218127
RF SCREAM 39X

31B PACKAGE OF THREE (3) IVF EMBRYOS
SUNNY VALLEY CANON 86E X RED BLAIR'S SCREAM 530E

PE	BW	WW	YW	MILK	CE
3.2	73.6	109.9	29.3	10.7	

STARWEST POL BLUEPRINT

S SUNNY VALLEY CANON 86E P1209434
SUNNY VALLEY TRINITY 53Z

MR HOC BROKER

D RED BLAIR'S SCREAM 530E PTG1218127
RF SCREAM 39X

As we ventured into the Simmental business, we knew it was critical to start with highly proven maternal lines and the Scream family was the first addition through embryo's purchased from Garth & Angie Rancier. Through a conversation with Barry Labatte and his confidence in the SVS Canon bull, the easy decision was made to flush Scream 530E to SVS Canon. how can you go wrong with genetics from Rancier & Sunny Valley. These are the first embryo's to sell off this highly anticipated mating. Get in on the ground floor. Embryos are stored at Bow Valley Genetics.



RCR FLIRTY MAGILCUTY 7D



Wheatland Northern Exposure
Sire of Embryos



Wheatland Rival 8125F
Sire of Embryos

32A

PACKAGE OF THREE (3) EMBRYOS

WHEATLAND NORTHERN EXPOSURE X RCR FLIRTY MAGILCUTY 7D

PE	BW	WW	YW	MILK	CE
1.9	68.7	96.9	20.2	9.6	

CCLT ALLIANCE 91C

WHEATLAND STOUT 930W

S WHEATLAND NORTHERN EXPOSURE BPG1252375
WHEATLAND LADY 511C

D RCR FLIRTY MAGILCUTY 7D BPTG1202505
RF FLIRTIN FOR CERTIN 37U

32B

PACKAGE OF THREE (3) EMBRYOS

WHEATLAND RIVAL 8125F X RCR FLIRTY MAGILCUTY 7D

PE	BW	WW	YW	MILK	CE
2.1	68.8	93.6	20.7	10.8	

CCLT ALLIANCE 91C

WHEATLAND STOUT 930W

S WHEATLAND RIVAL 8125F PG1269641
WHEATLAND LADY 5213C

D RCR FLIRTY MAGILCUTY 7D BPTG1202505
RF FLIRTIN FOR CERTIN 37U

When purchasing Flirt 7D as a feature female in the 2018 Cobra Event we never could have predicted the impact she would have on our herd and ultimately the impact we believe she will have in the breed for years to come. Flirty is very hard to fault on phenotype and when you throw in her pedigree she's down right exciting! Being a full sib to RF Certainly Flirtin 2022Z, the most dominate cow in the Simmental breed in this country makes Flirty 7D a genetic masterpiece herself. We have two matings on offer and each are equally exciting. Wheatland Northern Exposure was sold out of the 2019 Wheatland Sale for \$55,000 to Hoffman Ranch of Nebraska and the Wheatland Rival 8125F bull was bought out of that same sale by ourselves for \$40,000. Northern Exposure and Rival are both ¾ brothers to the \$317,500 Wheatland Man O War who sold this past spring and both of these bulls will have feature sons in Wheatlands sale this coming spring. Either bull you choose with this up and coming Flirt female will put some big time calves on the ground.

Guaranteed one (1) pregnancy per mating if implanted by a certified technician. Embryos are qualified for Canada, Australia and the US. Embryos are stored at Bow Valley Genetics.



REMINGTON MISS KNIGHT 63U



Kade's Miss Knight 20D
Daughter of Remington Miss Knight 63U



RF Capacity 742E
Sire of Embryos

33A

PACKAGE OF THREE (3) EMBRYOS

CCLT ALLIANCE 91C X REMINGTON MISS KNIGHT 63U

PE	BW	WW	YW	MILK	CE
2.4	72.9	100.5	21.2	10.3	

WS PILGRIM H182U

S CCLT ALLIANCE 91C BPG1214539
BROOKS SHINIA 1A

REMINGTON ON TARGET 2S

D REMINGTON MISS KNIGHT 63U PTG704347
BAR 15 MISS KNIGHT78E-51G

33B

PACKAGE OF THREE (3) EMBRYOS

RF CAPACITY 742E X REMINGTON MISS KNIGHT 63U

PE	BW	WW	YW	MILK	CE
3.7	80.3	123	26.8	8.0	

WFL WESTCOTT 24C

S RF CAPACITY 742E BPG1207984
RF FAMOUS 409B \ CC-RC

REMINGTON ON TARGET 2S

D REMINGTON MISS KNIGHT 63U PTG704347
BAR 15 MISS KNIGHT78E-51G



CCLT Alliance 91C
Sire of Embryos



GEFF County O
Sire of Embryos

33C

PACKAGE OF THREE (3) EMBRYOS

GEFF COUNTY O X REMINGTON MISS KNIGHT 63U

PE	BW	WW	YW	MILK	CE
2.7	74.9	120.1	23.1	8.3	

W/C LOADED UP 1119Y

S GEFF COUNTY O 3289219
RUBY NFF RHYTHM 475B

REMINGTON ON TARGET 2S

D REMINGTON MISS KNIGHT 63U PTG704347
BAR 15 MISS KNIGHT78E-51G



34

TWO PACKAGES OF THREE (3) UNITS OF SEMEN
W/C RELENTLESS 32C

GCC HARD AS STEEL 144W

WAGR DREAM CATCHER 03R

S YARDLEY UTAH Y361 US_2641894 **D MISS WERNING KP 8543U** US_2446017

MISS YARDLEY T170

MISS WERNING 534R

BW	WW	YW	MILK	CE
3.6	74.6	95.7	22.7	10.4

An opportunity to purchase semen on one of the hottest and highly sought after Simmental bulls in the industry. Warnings 2016 high seller for \$ 87,500 that continues to produce females winning all the majors south of the border. Out of the highest generating Simmental cow in the industry 8543U, making Relentless a maternal brother to Bankroll, Bullseye, Executive Order and Night Watch. Only a limited amount of semen was cleared for Canada. Two packages of 3 doses sell, so get your donors booked in and ready to flush.



35

TEN PACKAGES OF TEN (10) UNITS OF SEMEN
 HAROLDSON'S UNITED 33D 36G DLF HYF IEF MSUDF MDF

SHF TAHOE R117 T100

NJW 73S W18 HOMETOWN 10Y ET

S HAROLDSON'S UPGRADE T100 33D PC03024611 **D HAROLDSON'S WLC MIRA ET 52B** PC03030599

MOHICAN MISSEY 93W

HAROLDSON'S 37H MIRA ET 62K

BW	WW	YW	MILK	CE	FAT	REA	MARB
4.6	64.8	104	31	-2.3	0.004	0.44	0.28

Here is an opportunity to buy some semen on last year's high seller in the Premier and Guests Falls View Production Sale, Haroldson's United 33D 36G. United received lots of attention last fall when he was crowned National Champion Bull, won the President's Cup All Breed Bull Show and was one of the few calves in history to make the top 10 in the RBC Supreme. This bull has not looked back, he's powerful, big middle, stout, sound made with great testicle development. His mother is an ideal cow. She is attractive, with lots of rib and capacity. She is a very sound structured, beautifully uddered female with excellent milk flow. Take note of the teat and udder scores on this guy. His grandmother was our top donor and has the most registered progeny in Canada. His sire, Upgrade, was one of our past high sellers and sired many of the top bulls in last year's Champion carload in Denver. We certainly are excited about the future with this bull. Take advantage of this opportunity and make United a part of your program.

CONSIGNED BY HAROLDSON'S POLLED HEREFORDS



Haroldson's Marvel ET 56E



Haroldson's United 33D 36G



Haroldson's SCC Pavati 48G



Loewen Genesis G16 ET



Haroldson's Marvel ET 57E



Haroldson's JVJ Royal 24E



Haroldson's Insight 201D



Haroldson's Candace 5D 8F



Haroldson's HLV Marvel 48Y 12B



Blair's Nellie R117 ET 5B



Haroldson's AD Jessica 48Y 13B



Haroldson's SCC Marvel ET 280G



Haroldson's Marvel 45P 5W



Haroldson's Lassie 425X 22Z

36

OFFERING PICK OF THE 2021 HEIFER CALVES

Selling pick of the 2021 born heifer calves at Haroldson's Polled Herefords. We feel this is a great opportunity to come and acquire a future donor female, herd bull producer, a show heifer or better yet, all of the above. The 2021 calving season is bar none our most anticipated to date. We did as much ET work this year as we ever have, which will include full siblings to United, fresh new genetics off our Marvel 12B and 5W donors. This year's herd bull battery was as strong as its been, consisting of Pavati, Royal, Pilgrim and Insight. We are certainly excited to offer this opportunity, if you have any questions contact myself, Chad, at 306-577-1256 or one of the T Bar C staff. Pick must be made by August 15, 2021.

CONSIGNED BY JDL CATTLE CO.



JDL Janice Y79D 203G
Full sister

37

JDL **JANICE** Y79D 124H

JDL 124H PC03069106 JAN. 24, 2020

NJW FHF 9710 TANK 45P

S WORR OWEN TANKERAY Y79D ET PC03044660 **D** JDL **JANICE** 743 312Z PC02966456

BR KLD ROSE MARIE D79 ET

CRR ABOUT TIME 743

JDL JANICE 303T 210W

BW	WW	YW	MILK	CE
2.3	49.3	81.3	28.3	-1.1

JDL Janice Y79D 124H is an extremely complete made, big bodied attractive female. 124H is a moderate framed, easy doing fault free, broody daughter of JDL Janice 743 312Z. 312Z is also the dam of the 2017 Royal Winter Fair Supreme Champion female. Another daughter was the high selling Hereford female in the 2019 Royal Elite sale, who sold to Arthur Polled Herefords and Blair-Athol Farm and was also the 2019 Royal Hereford Futurity Champion Female. Her sire, Worr Owen Tankeray is a past Denver Champion and \$120,000 high seller and has gone on to prove himself to work in all aspects of the industry.



JDL Janice 11X 119C
Dam

38

JDL **HELLBOY** Y79D 118H

JDL 118H PC03069108 JAN. 18, 2020

NJW FHF 9710 TANK 45P

S WORR OWEN TANKERAY Y79D ET PC03044660 **D** JDL **JANICE 11X 119C** PC03005753

BR KLD ROSE MARIE D79 ET

TH 71U 719T MR HEREFORD 11X

JDL JANICE 743 312Z

BW	WW	YW	MILK	CE
3.3	53.2	86.1	30.4	-2.5

JDL Hellboy Y79D 118H is the stoutest, most powerful herd bull prospect we have ever raised. 118H is huge hipped, big topped, big boned wrapped in a super good-looking package. Hellboy 118H is good footed and as sound on the move as they come. His dam was the 2017 Royal Winter Fair Supreme champion female and is now producing the type of cattle that we strive to produce, including a full sister to 118H that sold in the 2019 Falls View sale to River Valley Polled Herefords for \$7000. His sire continues to sire high sellers, champions and donor quality females including RST GAT NST Lady 54B, the dam of Deberard, Montgomery, and The Profit for Hoffman's. Hellboy was 2020 Supreme champion bull at the Fall Finale show in Lindsay. We feel that he has the look, quality and genetics to be a great herd sire. Terms and Conditions to be announced.



39A

STONEWOOD CHAUNTEL 7H

SWG 7H PC03070190 JAN. 7, 2020

BW	WW	YW	MILK	CE
2.3	54.2	93.0	23.8	3.3

CRR ABOUT TIME 743

NJW 735 W18 DOWNHOME 21ZET

S RST TIME'S A WASTIN' 0124 C02991851 **D** DALMUIR CHAUNTEL 1C PC03004536
RST MS 1000 BLAZER 2029 DALMUIR CHAUNTEL 113Z

39B

STONEWOOD SUSIE 33H

SWG 33H PC03070198 MAR. 3, 2020

BW	WW	YW	MILK	CE
3.2	51.3	94.4	22.7	5.5

MSU TCF REVOLUTION 4R

NJW 735 W18 DOWNHOME 21ZET

S STONEWOOD FIELDER 10F PC03046056 **D** DALMUIR SUSIE 608B PC03000609
STONEWOOD JANICE 10D DALMUIR SUSIE 108N

Super cow prospect in the making here. The Chantel cow line has been very influential at our place and many others. A rare opportunity to purchase a calf sired by the great breeding Times A Wastin. This calf's dam was senior heifer calf champion at Royal. Halter broke and super quiet.

A real exciting fancy calf here. Upheaded big bellied and cowy. One of our first highly anticipated Fielder calves and he did not disappoint. This March calf has lots of power and look to compete. Halter broke and has been shown. Many generations of beautiful cows in this Susie family should ensure this calf to produce for many years.



Stonewood Fielder 10F
Sire



NJW 73S 485T GOLDENROD 62A ET



Churchill Rock 646D ET
Sire of Embryos



TH 403A 475Z Pioneer 358C ET
Sire of Embryos

40A PACKAGE OF FOUR (4) IVF EMBRYOS
CHURCHILL ROCK 646D ET X NJW 73S 485T GOLDENROD 62A ET

PE	BW	WW	YW	MILK	CE
3.8	58.2	92.3	31.2	1.7	

NJW 98S R117 RIBEYE 88X ET

KJ HVH 33N REDEEM 485T ET

S CHURCHILL ROCK 646D ET PC03043687
SR CCC LADYSPORT 2205 Z ET

D NJW 73S 485T GOLDENROD 62A ET PC03027914
NJW P606 72N DAYDREAM 73S

40B PACKAGE OF THREE (3) IVF EMBRYOS
TH 403A 475Z PIONEER 358C ET X NJW 73S 485T GOLDENROD 62A ET

PE	BW	WW	YW	MILK	CE
5.3	74.5	120.2	28.5	-1.4	

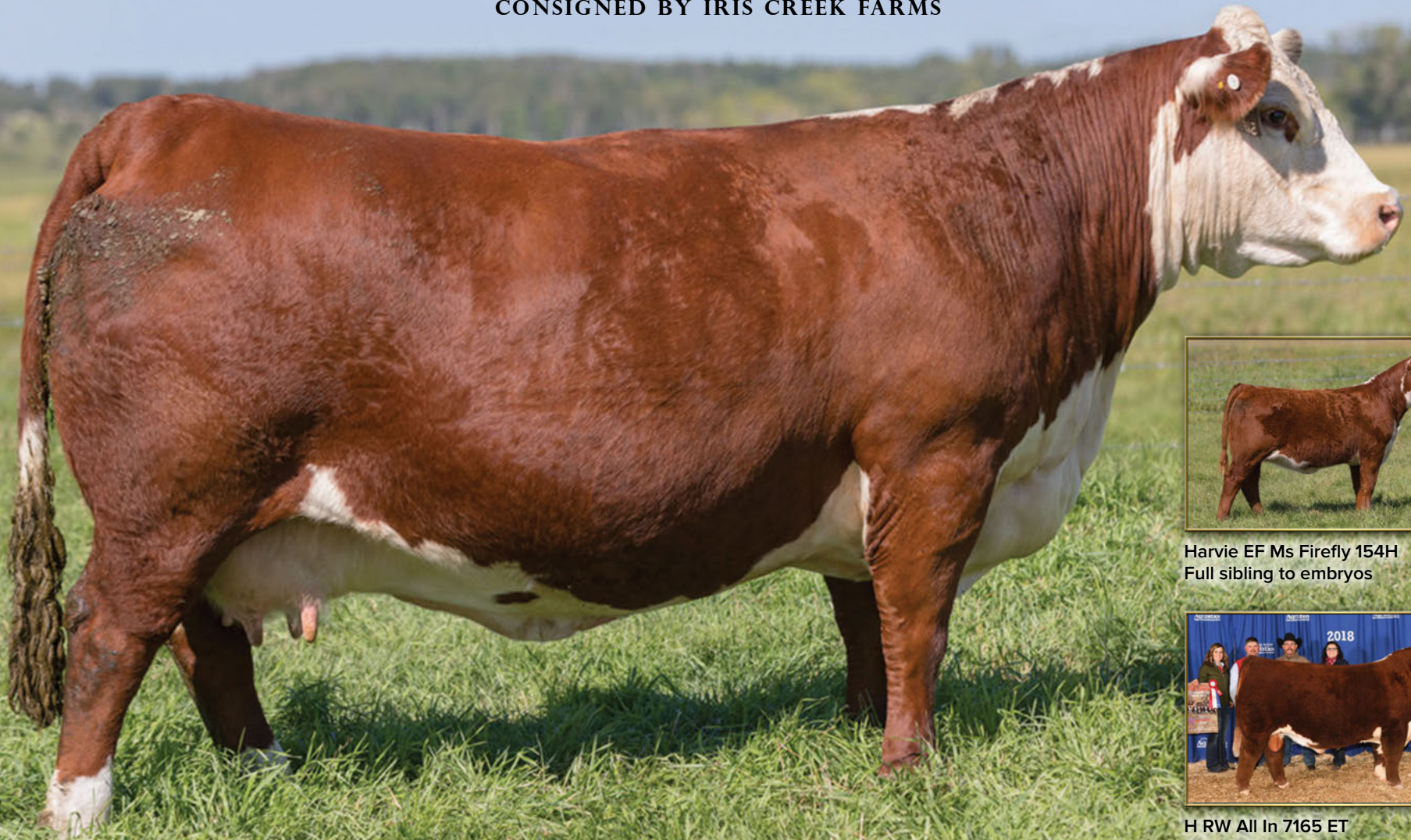
TH 89T 755T STOCKMAN 475Z

KJ HVH 33N REDEEM 485T ET

S TH 403A 475Z PIONEER 358C ET PC03042659
TH 71U 17Y RITA 403A

D NJW 73S 485T GOLDENROD 62A ET PC03027914
NJW P606 72N DAYDREAM 73S

NJW Goldenrod 62A was the \$42,000 pick in Denver from the Ned & Jan Ward program. She has proved herself to be a very powerful and popular donor. Opportunities to own these kind of genetics aren't normally available and we can't stress enough the importance of acting to acquire NJW 62A embryo's. You choose between Churchill Rock 646D or TH Pioneer 358C but either way you get to introduce NJW 62A into your program.



Harvie EF Ms Firefly 154H
Full sibling to embryos



H RW All In 7165 ET
Sire of Embryos

41A PACKAGE OF THREE (3) EXPORTABLE EMBRYOS
H RW ALL IN 7165 ET X HARVIE MS FIREFLY ET 35Z

PE	BW	WW	YW	MILK	CE
3.9	54.8	92.5	26.0	-1.9	

JDH JJD 9Y 485T ALL IN 96B ET

NJW FHF 9710 TANK 45P

S H RW ALL IN 7165 ET PC03050475 **D HARVIE MS FIREFLY ET 35Z** PC02975369 **S H RW ALL IN 7165 ET** PC03050475 **D HARVIE MS FIREFLY ET 35Z** PC02975369

EXR TERRI 489

HARVIE MISS FIREFLY 51F

41B PACKAGE OF THREE (3) EXPORTABLE EMBRYOS
H RW ALL IN 7165 ET X HARVIE MS FIREFLY ET 35Z

PE	BW	WW	YW	MILK	CE
3.9	54.8	92.5	26.0	-1.9	

JDH JJD 9Y 485T ALL IN 96B ET

NJW FHF 9710 TANK 45P

S H RW ALL IN 7165 ET PC03050475 **D HARVIE MS FIREFLY ET 35Z** PC02975369

EXR TERRI 489

HARVIE MISS FIREFLY 51F

35Z was Heather and Kent's pick of the Harvie Ranching Dispersal. Her unmatched length, eye appeal and stoutness made this female a top candidate to add to our donor pen but her outstanding \$9500 heifer calf more than sealed the deal. These full sibling eggs are a predictable mating with the potential to pay for themselves many times over, and they just may be out of Hereford Miss World come sale night. Guarantee of one (1) 90 day pregnancy per 3 embryos if implanted by a certified technician.

CONIGNED BY HARVIE RANCHING & TORCH VIEW CATTLE CO



Harvie Ms Firefly ET 47H
Sold to Storey Hereford Ranch
for \$31,000



Harvie Ms Medonte 106H
Sold to Mcdonald Farms and
Lowdermans for \$20,000



Harvie Ms Unique ET 120H
Sold to El Rancho Mexico
for \$10,000

2018



42

TEN PACKAGES OF FIVE (5) UNITS OF SEMEN
HARVIE OVHF EMPOWER ET 5F

BW	WW	YW	MILK	CE
6.0	76.7	123.3	21.1	-8.4

HYALITE ON TARGET 936
S R LEADER 6964 PC03025498
R MISS REVOLUTION 1009

PRESIDENT'S
H/TSR/CHEZ/FULL THROTTLE ET
D NEXT GEN RIESLING 295 ET PC03018911
STAR SPIRIDGE KESSEY 321L ET

A rare opportunity to tap into one of the leading polled Hereford sires in N. America, Harvie OVHF Empower ET 5F. The buzz around Empower is electric, mostly due to his flat out amazing offspring that yielded big sales results this fall. Empower sired the top selling heifer calves in the Harvie Ranching Complete Polled Hereford Dispersal and his progeny averaged \$13,500. His calves, are correct, well constructed from the ground up with an impressive hip structure, extra middle and angular attractive front ends. His maternal sibling, Harvie OVHF Hudson ET 174H was the \$30,000 pick of the bulls in the dispersal. Empower's full sister is in production with a beautiful heifer calf at side, she is the reigning RAWF Reserve Champion Hereford Female, the Champion Hereford in the Masterfeeds National Jr Beef Heifer Show and the 2018 CWA Reserve National Champion Female. The show road has been kind to Empower and his siblings. Empower hit the show road winning 2018 CWA National Sr. Bull Calf Champion and the President's Classic Champion Hereford followed by the Champion Bull at the 2019 Manitoba Ag Ex, he was also the top selling animal at the 2018 CWA to the Empower Syndicate and Torchview Cattle co.



43

FIVE PACKAGES OF TEN (10) UNITS OF SEMEN

NJW 73S 38W RIMROCK 27C ET {MDF}

SHF PROGRESS P20

PW VICTOR BOOMER P606

S NJW 76S P20 BEEF 38W ET PA43002917

D NJW P606 72N DAYDREAM 73S PA42693956

NJW 55N STARDUST 76S

NJW 94J DEW 72N

BW	WW	YW	MILK	CE
0.9	52.0	75.5	33.7	4.7

Rimrock is rapidly becoming a household name both north and south of the 49th parallel. NJW used him by AI for the past couple seasons and this spring decided to purchase him back from us and our partners at Glenlees. Anyone who has seen the daughters in production or the sons walking pastures knows why. This is the first time Rimrock semen has been on the open market. Take advantage of this opportunity to advance your program.

Canadian qualified semen. Stored at Bow Valley Genetics. All shipping costs are the responsibility of the purchaser.



Full sister

44

TEN PACKAGES OF TEN (10) UNITS OF SEMEN
DF MR OUTRAGEOUS 64G

LT LONG DISTANCE 9001 PLD

TR MR FIRE WATER 5792RET

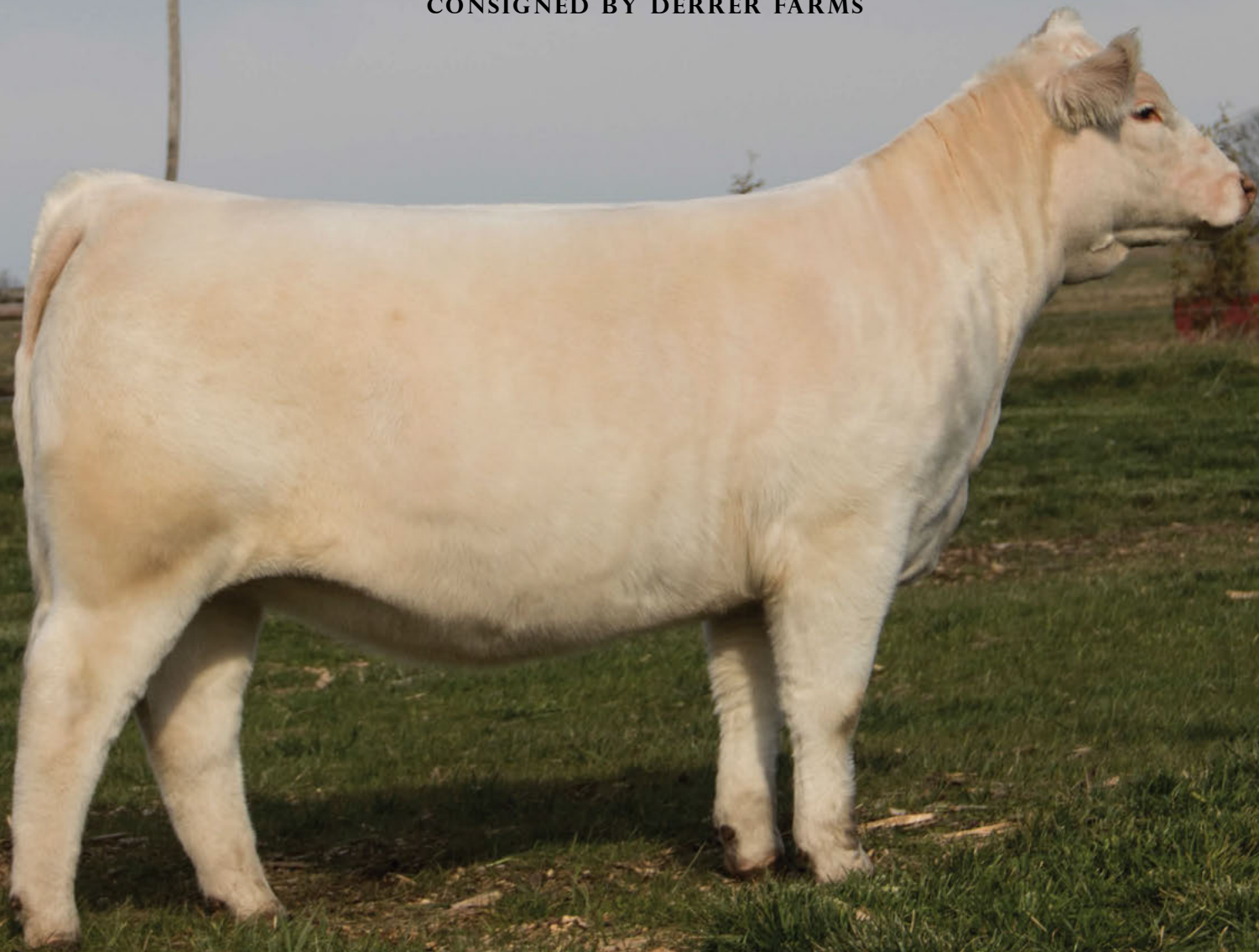
S M&M OUTSIDER 4003 PLD M846631 **D TR PZC IMPRESSIVE LADY 0790ET** EF1121686

M&M MS CARBINE 1567 PLD

THOMAS MS IMPRESSIVE0641

BW	WW	YW	MILK	CE
0.7	32	60	6	4.2

I think its safe to say that Outrageous has captured the attention of the most astute cattlemen and women who have seen him this past year. Outrageous is packed with so much muscle and bone and wraps it up in a stunning package. He is incredibly long sided and transitions perfectly from his shoulder into his fore rib. For a bull who is constructed so massively the way he moves like a cat may be the most impressive. His pedigree combines the hottest sire in the Charolais breed M&M Outsider with a full sister to the great Turton bull (Firewater x Thomas 0641) His full sister DF Empress had a successful show career for us and has developed into a tremendous two year old that raised an exceptional heifer calf this year that will write her own story next fall. Outrageous will be making his way to show in Oklahoma City for Cattlemen's Congress, where we think his popularity will just explode! Heres a unique opportunity to tie into what we think is a great one.



45

DF **MS MONTE CARLO** 043H

043H F1296390 FEB. 5, 2020

LT LONG DISTANCE 9001 PLD

S M&M OUTSIDER 4003 PLD M846631

M&M MS CARBINE 1567 PLD

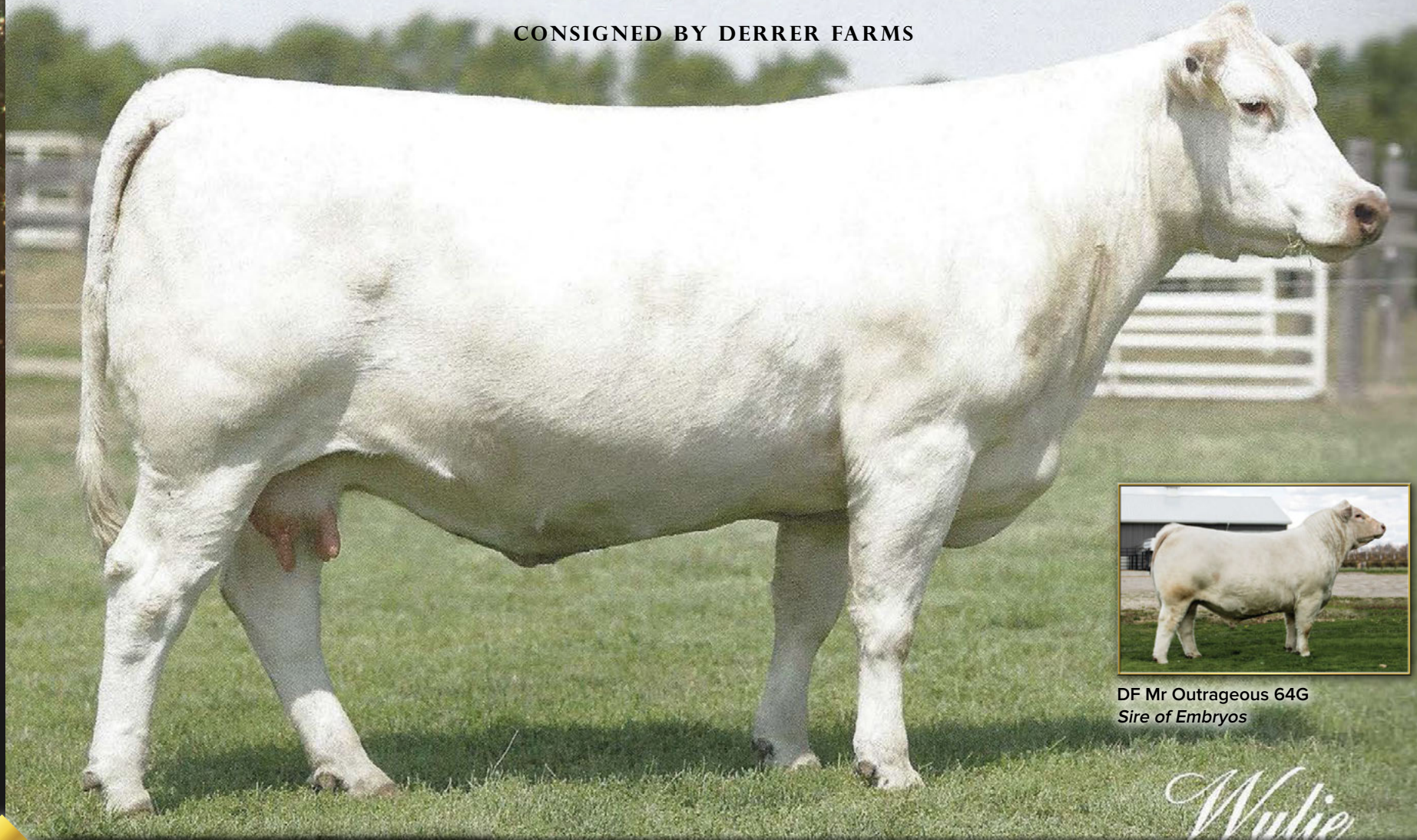
TR PZC MR TURTON 0794 ET

D TR MS MONTELLANO 4653B F1198932

TR MS MONTELLA 1572Y

BW	WW	YW	MILK	CE
0.7	34	60	7	2.9

White hot pedigree on a white hot heifer! The combination of Outsider x Turton x TR Ms Montella 1582Y is a proven commodity not only in the show ring, but in the donor pen as well. 043 is the kind you'll wish you had a hundred of in the keeper pen and the one you'll want to have in the show barn. Impeccable structure, bold sprung and cowy - the kind we all make a living on. Here she is - the deck is stacked in your favor. Take advantage of a unique opportunity!



DF Mr Outrageous 64G
Sire of Embryos

Wylie

46

TWO PACKAGES OF THREE (3) EMBRYOS

DF MR OUTRAGEOUS 64G X TR MS WYOMING WIND 5604R

M&M OUTSIDER 4003 PLD

LT WYOMING WIND 4020 PLD

S DF MR OUTRAGEOUS 64G EM925897 **D TR MS WYOMING WIND 5604R** F1024831

TR PZC IMPRESSIVE LADY 0790ET

JES MS HI YIELD K31

PE	BW	WW	YW	MILK	CE
	1.4	27	50	6.5	0

This famed donor dam has had success that is hard to comprise to a single catalogue page. She is a beautiful cow that was pictured above as a 12 year old that had just weaned off an impressive heifer calf. She is the dam or granddam of two major herd sires, a National Champion Female and she boasts a large list of high sellers and champions. She herself was Reserve Champion Bred and Owned at the National Jr. heifer show. Without question, 5604 is one of the most decorated females in the herd registry. This is a golden opportunity to purchase highly sought after genetics on the cutting edge.

Her major accomplishments and references include:

- Dam of Diablo 2584Z
- Dam of 2013 National champion female, TR Montella 1572Y
- Dam of Wylie Fire 0761X
- Granddam of TR Wrangle Up 2502Z
- Dam of DF Ms Merlot 56049
- Dam of TR Ms Madonna who sold for \$115,000 in the Hartman sale
- Dam of 2 top sellers in our fall sale of whites



CRG Princess 42F
Dam of Embryos

47A **47B**

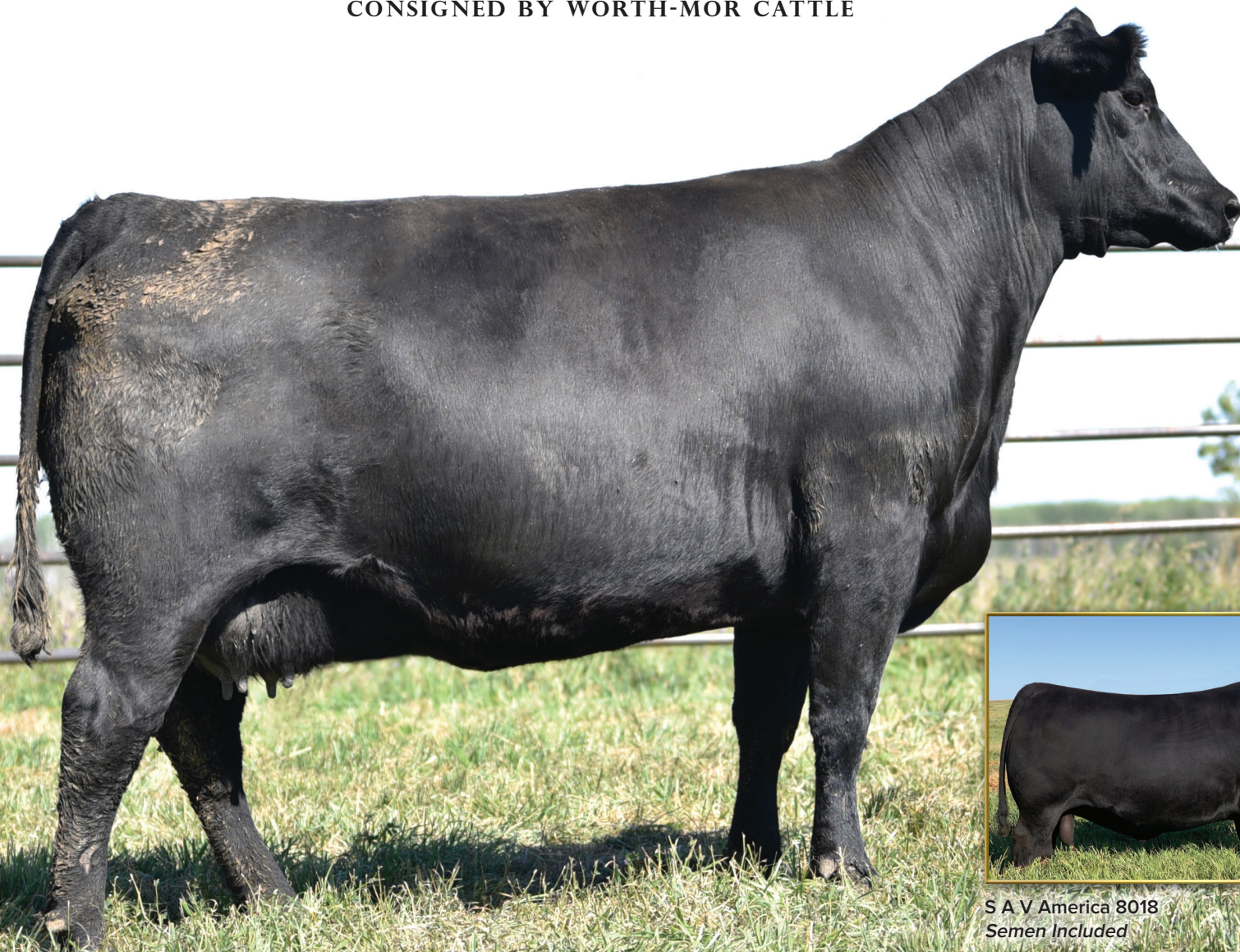
TWO PACKAGES OF THREE (3) EMBRYOS
SVY TRUST 6H X CRG PRINCESS 42F

PE	BW	WW	YW	MILK	CE
1.4	44	80	26	6.4	

M6 BELLS & WHISTLES 258 P
S SVY TRUST 6H PEMC792307
SVY STARSTRUCK 409B

TR PZC MR TURTON 0794 ET
D CRG PRINCESS 42F PEFC750866
WOOD RIVER PRINCESS 13Y

What an extremely exciting opportunity to get in on cutting edge genetics in the Charolais industry. SVY Trust 6H just sold as the record high selling bull in the high profile Superstar sale in Saskatoon at \$123,000.00 with semen being sold all over the world. SVY Trust 6H is out of one of the greatest cow families in the Charolais breed, the Starstucks, Starstuck is synonymous with supremely high quality seedstock. CRG Princess 42G is the reigning National Champion Charolais female, being crowned Grand Champion female at the prestigious Toronto Royal 2019, this attractive, big ribbed female captured much attention and this combination with SVY Trust 6H could very well be your next national Champion. Guaranteed one (1) pregnancy per package if impanted by a certified technician.



S A V America 8018
Semen Included

48

OFFERING THE RIGHT TO FLUSH

JL BLACKCAP MAY 6354

BW	WW	YW	MILK	CE
1.7	58	104	36	5.0

S A V NET WORTH 4200

S S A V DOUBLE DIGIT 2799 1721397

S A V MAY 2397

S A V ELIMINATOR 9105

D JL BLACKCAP MAY 2294 1668170

S A V BLACKCAP MAY 8344

We reached out and bought what we think will elevate our program to the next level. JL Blackcap May 6354 was a \$20,000 high seller at the historic Johnson Livestock Dispersal and has all the attributes to be a big time donor female in the making . With a stellar EPD profile and calving early at the end of January, we have decided to offer a flush on this popular female. Her donor dam also sold in the dispersal for \$14,500 to Parkview Angus and her 13 year old grand dam sold for \$10,000. 6354 herself has raised a sale topping bull in the JL bull sale, and also has a son who will be a feature in their 2021 upcoming final bull sale. As an added bonus to this flush , included will be one straw of SAV America that will be included in the purchase price of this flush. America is impossible to get, and we witnessed at the JL dispersal a \$500 per straw value! The opportunity here is endless on this female that has an udder that you couldn't draw any better. Guaranteeing 6 embryos with an open top.

BP1



INTERNATIONAL TRANSPORTATION ESTABLISHED IN 1933

OFFERING **4** SPOTS ON ANY EXISTING TRUCK
GOING TO A CENTRAL POINT
IN CANADA

BRUCE & BUTCH POLAND

829 REST ACRES ROAD, PARIS, ON, CANADA N3L 3E3
519-442-3106 OR 519-442-6242 FAX 519-442-1122

TOLL FREE 877-442-3106

hsknill@ppoe.ca www.hsknilltransport.com

BP2

Offering **\$750** towards any of our services

Complete Reproductive Services Centre

Domestic and Export
Qualified Semen Collection
Owners Use Semen

Embryo Collection and Transfer
Certified for Export Production
IVF Flushes

Embryo and Semen
Storage and Transfer
Recip Program

1.587.887.1934

Rob F. Stables, DVM embryos@bowvalleygenetics.com
Facility located at Bassano, AB www.bowvalleygenetics.com



EST. 2009

GENETICS

Advancing Reproductive Solutions

BP3



Heartland

VETERINARY SERVICES



Offering \$500 towards any fertility related service

Listowel

Fire No. 8451, Road 164
Hwy. 23 North
P.O. Box 66

Listowel, Ontario N4W 3H2
Telephone: 519-291-2060
Toll Free: 1-800-565-2047
lclinic@heartlandvets.ca

Mount Forest

322 Main Street North
Mount Forest, Ontario N0G 2L2
Telephone: 519-323-4422
Toll Free: 1-877-523-4422
Fax: 519-323-4334
mfclinic@heartlandvets.ca

Drayton

7294 Wellington Street North
P.O. Box 70
Drayton, Ontario N0G 1P0
Telephone: 519-638-3391
Toll Free: 1-877-761-2253
Fax: 519-638-5858
dclinic@heartlandvets.ca

BP4

Offering one full page colour ad in Today's Angus Advantage magazine



TODAYS Angus Advantage

Ph: 306-933-4200 Fax: 306-934-0744
info@todaysangus.com

www.todaysangus.com

TERMS & CONDITIONS

TERMS

The terms of the sale are cash or cheque, payable at par at the sale location. The right of property shall not pass until after settlement has been made; no invoicing on buyers in attendance unless previous arrangements have been made. Every animal sells to the highest bidder and in cases of disputes, the auctioneer's decision will be final. Announcements from the auction block will take precedence over the printed matter in the catalogue. Current exchange rates will be announced sale day. All monies are in Canadian funds.

CERTIFICATE OF REGISTRATION

Each animal will carry papers issued by the appropriate breed association, unless otherwise stated. A certificate of registry duly transferred will be furnished to the buyer for each animal after payment has been made.

HEALTH

All animals in the sale have met all necessary health requirements.

GUARANTEE

Each animal becomes the purchaser's risk immediately after the animal is sold. All animals in this sale will be sold under the terms and guarantees set forth by the appropriate breed association with regard to health, freedom from defects and from both reproductive and specific genetic unsoundness.

PREGNANCY INFORMATION

All serviceable age females have been pregnancy examined by an accredited veterinarian, giving an estimated length of gestation. This estimated gestation period shall be used only as a guideline to calving and is not a guarantee of actual service.

LIABILITIES

All persons attend the sale at their own risk. The seller, facility owner and sale manager assume no liability legal or otherwise, for any accidents that occur. It is understood that T Bar C Cattle Co. (2013) Ltd. is acting only as a medium between buyer and seller and is not responsible for any failure on the part of either party to live up to his obligations. Neither does T Bar C Cattle Co. (2013) Ltd. assume any financial obligations to collect or enforce collection of any monies between parties and any legal action that may in exceptional cases be taken must be between the buyer and the seller. T Bar C Cattle Co. (2013) Ltd. assumes no responsibility for any credit extended by the seller to the buyer. The buyer must look to the seller for fulfillment of all guarantees and representations made hereunder.

DELIVERY

Assistance will be given in getting your purchases home. Each animal becomes the risk of the purchaser as soon as sold.

PHONE, MAIL, WIRE BIDS

Bidders unable to attend the sale may phone, wire or mail their bids and instructions to the sale manager, auctioneer or special representatives. Bids must be received in sufficient time prior to the sale.

INSURANCE

We strongly recommend that insurance is purchased for full value.

ERRORS

All announcements at sale time, written or oral, supersede any written material in the catalogue.

CONSIGNORS...

BLAIR-ATHOL FARMS

Duncan & Val Lees
Box 386, Arcola, SK S0C 0G0
306-455-2619
306-577-9703
Jeff, Grace, Christin, Kylee, Jackson, Hannah & Josie
306-577-1375
www.blairatholfarms.com

BLAIRS.AG CATTLE COMPANY Lots 14A, 14B, 31A, 31B, 40A, 40B

Kevin Blair
Box 610, Lanigan, SK S0K 2M0
306-365-7922
Blake MacMillan: 306-528-7484
kevin@blairs.ag

BLACK RIVER FARMS

Dan & Janet Munro
301 Catering Road, Sutton, ON L0E 1R0
Cell: 416-996-9658
branzak@sympatico.ca

CUDDY FARMS

John Flaherty
28429 Centre Road RR5
Stratyroy, ON N7G 3H6
519-870-8800
johnfl@cuddy.com

DERRER FARMS

Rod, Julie & Rylee Derrer
13913 42nd Street W. Milan, IL 61264
309-314-1492
rjderrer@aol.com

DUDGEON CATTLE CO.

Brian & Kim Dudgeon and Family
1128 Bruce Road 40, Dobbinton, ON N0H 1L0
519-353-4014
Brian's Cell: 519-270-2500
dudgeongroup@gmail.com

DUSTY ROSE CATTLE CO.

Randy & Laurie James
Box 67, Arcola, SK S0C 0G0
306-575-7833
jamesoilfield@sasktel.net

GILCHRIST FARMS

Brad & Kristie Gilchrist
1269 Grey Ox Ave RR 5, Lucknow, ON N0G 2H0
519-440-6720
brad@gilchristfarms.com

G R SIMMENTALS

Gary & Leigh Rairdan
Box 285 Stettler, AB T0L 2L0
403-740-6823

GRIST FARMS

Dave Grist
Orton, ON L0N 1N0
519-855-9540
dgrist@hotmail.com

HAROLDSON'S POLLED HEREFORDS

Chad, Lenna & Kristy Wilson
Box 372, Wawota, SK S0G 5A0
Chad: 306-577-1256

HARVIE RANCHING

Ian & Marlene Harvie, Cole & Jill Harvie
RR 2, Olds, AB T4H 1P3
Cole: 403-994-1314
Jill: 403-771-3502
Ian & Marlene: 403-507-3886
harvie@harvieranching.com

Lots 43

HASSON LIVESTOCK

Rob Hasson
5536 Township Rd 3 RR 7, Guelph, ON N1H 6J4
416-817-7339
hassonlivestock@live.com

HOFMAN RANCH

Jason, Kaycee & Haxton Hoffman
Box 287, Thedford, NE 69166
Jason's Cell: 530-604-5096
jason@hoffmanranch.com

IRIS CREEK FARMS

Bruce, Heather, Bryce, Kent & Taylor Ribey
1073 Con 12, R.R.# 4, Paisley, ON, N0G 2N0
519-832-6221
Bruce: 519-353-8405
Heather: 519-389-7745
Bryce: 519-389-1571
icf@bmts.com

JAYMARANDY LIVESTOCK

Mark and Elisabeth Angus
Box 1273, Beausejour, MB R0E 0C0
204-281-5099
jaymarandy@gmail.com

JDL CATTLE CO.

David Shirley, Josh & Jessica Lasby
Justin, Jaimie & Jase Lasby
667019 20 SR, Mulmur, ON L9V 0V5
Justin: 519-943-4147
Josh: 519-278-6819
jessica.lasby@hotmail.com

JIMMY JOE HENDERSON

Box 219, Stettler, AB T0C 1L0
403-740-9270
jimmyjoehenderson@gmail.com

LYNDEN MANOR FARM

Glen and Caroline Smith
Box 191, Carlisle, ON L0R 1H0
416-526-5428
905-690-6626
g.smith@merit-insurance.com

MAINSTREAM GENETICS

Chris Schmidt
Box 547, Watrous, SK S0K 4T0
306-946-7948
chris@mainstreamgenetics.ca

MILLER LIVESTOCK

Brad and Meghan Miller
1672 Mullifarry Drive, Kerwood, ON N0M 2B0
519-871-1970
mugskoyle@hotmail.com

POPLAR MEADOWS ANGUS

Tanya & Monty Belsham
Ryan Currie: Herdsman
Box 1025, Houston, BC V0J 1Z0
Tanya Cell: 250-845-8474
Ryan Cell: 613-883-2141
tdbelsham@gmail.com

PRAIRIE COVE CHAROLAIS

Tim & Wanda Bullick
Tyler & Justine Bullick, Indy and Scarlet
Box 672, Bashaw AB T0B 0H0
Cell: 403-501-0660
tyler.bullick2014@gmail.com

PREMIER LIVESTOCK

Peter Frijters
5164 Line 58 RR 2, Milverton, ON N0K 1M0
519-276-9314
pfrijters@crinet.com

Lots 1, 4A-4C, 6

Lot 35

Lots 41A, 41B

Lot 15

Lot 37, 38

Lots 21A, 21B

Lots 25A, 25B

Lot 1

Lots 13A, 13B

Lot 10, 20, 35

Lots 47A, 47B

Lots 1-9B, 26A, 26B, 44

RAIL LINE FARMS

Paul & Brad MacIntyre
221 Bruce County Rd 1 RR 5, Lucknow, ON N0G 2H0
Paul's Cell: 519-357-0884
Brad's Cell: 519-357-5469

R PLUS SIMMENTALS

Marlin and Lucille LeBlanc
Box 1476, Estevan, SK S4A 2L7
306-421-2470
marlin@sasktel.net

ROCK CREEK FARMS

Will Pilgrim
613-433-4963

SPRING CREEK SIMMENTALS

Brian McCarthy
Box 467, Moosomin, SK S0G 3N0
306-435-7527
brian.mccarthy@live.ca

STONEWOOD GRANGE

Chris, Cyndi, Matt, Ange, Logan & Blake Leahy
1899 17th Line, Lakefield, ON K9L 2H0
705-927-4995

SUNDERLAND RANCH

Terry & Rachele Sunderland
Box 2139, Maple Creek, SK S0N 1N0
306-662-3021
terrysunderland@sasktel.net

TORCH VIEW CATTLE COMPANY

Matt & Carissa Hordos
Matt: 306-812-9233

VAN ESSE LIVESTOCK

Matt & Peter Van Esse
8101 Cedar Hedge Line, Dover Centre, ON N0P 1L0
519-436-5876
vanesse48@hotmail.com

WEBER FAMILY ANGUS.

Ian, Tina, Alyssa and Spencer Weber
Listowel, ON
(226) 343-4890
ian@weberfamilyangus.com

W2 LAND & CATTLE

Kelly, Jenna, Marley, Cash, Jaycee & Merit Waltz
Box 3739, Vermillion, AB T9X 2B7
780-853-3834
kellywaltz@hotmail.com

WEPPLER CATTLE COMPANY

Braeden Weppler
117078 Grey Rd., Tara, ON N0H 2N0
519-375-2625
braedenweppler@gmail.com

WHISKEY HOLLOW

Gord & Shauneen Tomlinson
1647 County Road 45, Norwood, Ont. K0L 2V0
705-931-5436

WHISKEY LANE LIVESTOCK

Scott & Paula, Jason & Shelby Cornish
2295 Hwy 7, Indian River, ON K0L 2B0
Paula Cell: 705-341-3220
Scott Cell: 705-878-3248

WILBAR CATTLE CO.

Bryan and Tracey Willms
Box 176, Dundurn, SK S0K 1K0
Bryan's Cell: 306-492-7504
Tracey's Cell: 306-380-6772
wilbarcattle@gmail.com

WINDULAN CATTLE COMPANY

Mike Portena
6077 Line 60 RR 1, Moncton, ON N0K 1P0
519-347-2907

Lot 22

Lot 29

Lot 1

Lot 27

Lots 39A, 39B

Lots 18A, 18B

Lots 42

Lot 16

Lots 8A-9B, 19, 26C

Lots 32A 32B

Lot 34

Lot 44

Lot 11

Lot 24

Lot 7

RETURN UNDELIVERABLE
CANADIAN ADDRESSES TO:

T BAR C CATTLE CO. LTD.
BOX 2330
WARMAN, SASKATCHEWAN
S0K 4S0



CREATED BY
Today's
Publishing